



FUJIFILM

DIGITAL CAMERA



FinePix4900zoom

PARTS LIST
E/EG-Model



WARNING

THE COMPONENTS IDENTIFIED BY MARK  IN THE PARTS LIST SHOULD BE REPLACED ONLY BY THE COMPONENTS SPECIFIED IN THE PARTS LIST.
RISK OF FIRE AND ELECTRIC SHOCK.

FUJI PHOTO FILM CO., LTD.

Ref.No.:ZM00343-301
Printed in Japan 2000.10(NT)

SAFETY CHECK-OUT

After correcting the original problem, perform the following safety check before return the product to the costomer.

1. Check the area of your repair for unsoldered or poorly soldered connections. Check the entire board surface for solder splasher and bridges.
2. Check the interboard wiring to ensure that no wires are "pinched" or contact high-wattage resistors.
3. Look for unauthorized replacement parts, particularly transistors, that were installed during a previous repair. Point them out to the customer and recommend their replacement.
4. Look for parts which, though functioning, show obvious signs of deterioration. Point them out to the customer and recommend their replacement.
5. Check the B + voltage to see it is at the values specified.

6.



RISK OF FIRE-
REPLACE FUSE
AS MARKED

CAUTION: FOR CONTINUED PROTECTION AGAINST FIRE HAZARD, REPLACE ONLY WITH SAME TYPE 2.5 AMPERES 125V FUSE.

ATTENTION: AFIN D'ASSURER UNE PROTECTION PERMANENTE CONTRE LES RISQUES D'INCENDIE, REMPLACER UNIQUEMENT PAR UN FUSIBLE DE MEME, TYPE 2.5 AMPERES, 125 VOLTS.

7.



WARNING!
HIGH VOLTAGE

WARNING:
TO REDUCE THE ELECTRIC SHOCK, BE CAREFUL TO TOUCH THE PARTS.

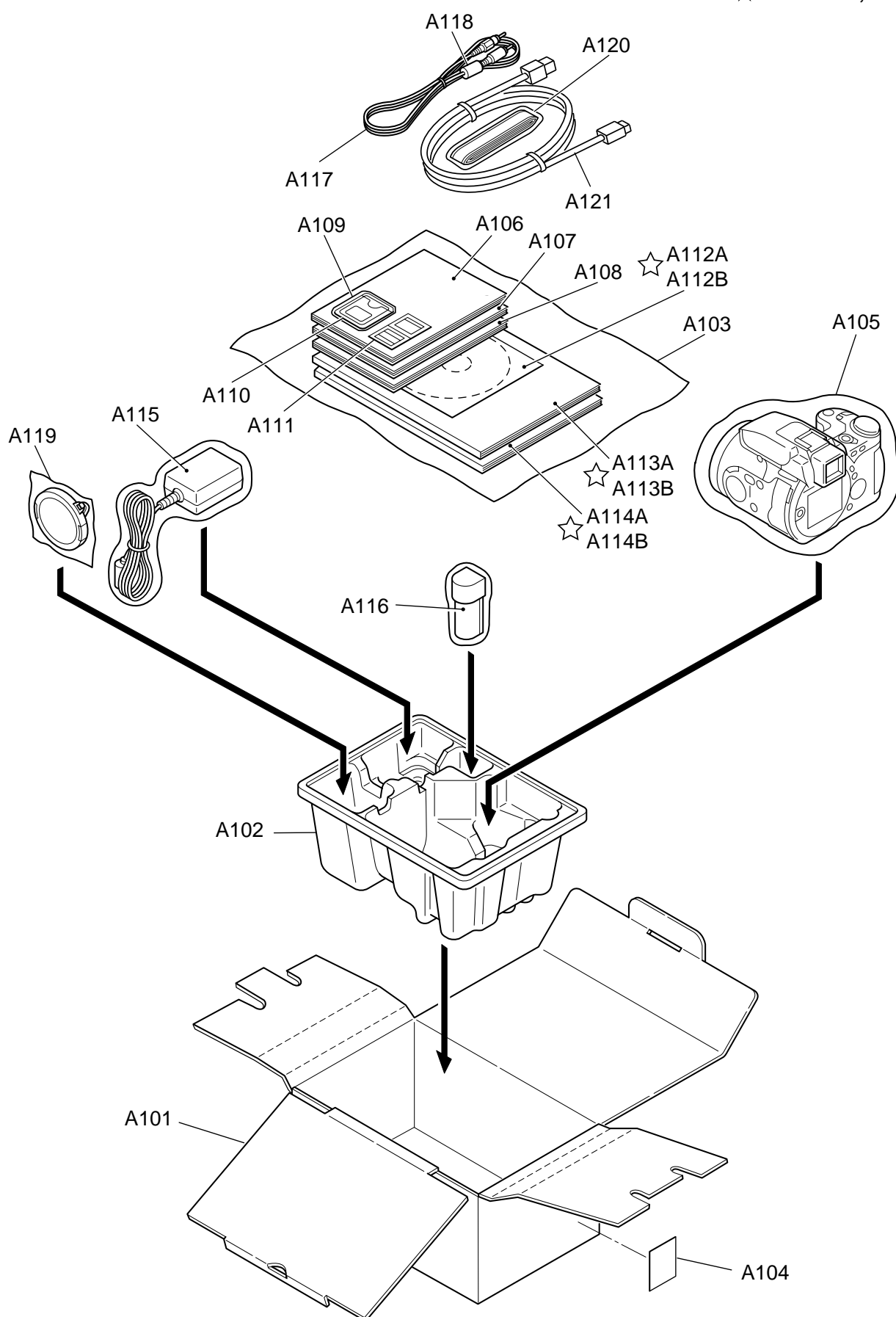
TABLE OF CONTENTS

	page
1. Packing and Accessories.....	4
2. Mechanical Parts	
2-1.Cabinet F	8
2-2.Cabinet R	10
3. Electrical Parts	12
4. Index	21

1 Packing and Accessories FinePix4900ZOOM(E/EG) PARTS LIST

1. Packing and Accessories E-Model

☆ Revised 21,Nov,2000



FinePix4900ZOOM(E/EG) PARTS LIST 1 Packing and Accessories

Ref. No.	Parts No.	Description	Price	Common	Remark
A101	FZ03964-200	UNITARY BOX			
A102	FZ03919-100	SHEET MOLD		J/U/E/EG-MODEL	
A103	AZF0000-111	BAG PLASTIC NO.11		J/U/E/EG-MODEL	
A104	BB06392-100	LABEL PLAIN 2		U/E/EG-MODEL	
A105	AZF0000-101	LDPE BAG NO.10		J/U/E/EG-MODEL	
A106	BB11855-200	EN MANUAL		U/E/EG-MODEL	ENGLISH
A107	BB11855-300	FR MANUAL			FRANCH
A108	BB11855-400	GER MANUAL			GERMAN
A109	BF02317-200	SSFDC ASSY		U/E/EG-MODEL	16MB
A110	BB04598-400	SSFDC DUST COVER		U/E/EG-MODEL	
A111	BB11327-100	SSFDC LABEL		U/E/EG-MODEL	
★ A112A	FZ03903-100	CD-ROM		U/E/EG-MODEL	1st
★ A112B	FZ03903-101	CD-ROM		U/E/EG-MODEL	2nd
★ A113A	BB10768-300	USB MANUAL1 E		U/E/EG-MODEL	1st
★ A113B	BB10768-301	USB MANUAL1 E		U/E/EG-MODEL	2nd
★ A114A	BB10768-600	USB MANUAL1 FG			1st
★ A114B	BB10768-601	USB MANUAL1 FG			2nd
A115	FZ03842-200	AC ADAPTER			AC-5VH
A116	FZ03958-100	BATTERY PACK		U/E/EG-MODEL	1300MAH 3.7V
A117	FZ03284-100	VIDEO CABLE		J/U/E/EG-MODEL	RCA PIN-MINI JACK
A118	FZ00363-200	FILTER		J/U/E/EG-MODEL	
A119	BU01815-100	LENS CAP ASSY		J/U/E/EG-MODEL	
A120	BB11931-100	SHOULDER BELT		J/U/E/EG-MODEL	
A121	FZ03529-200	USB CABLE		U/E/EG-MODEL	

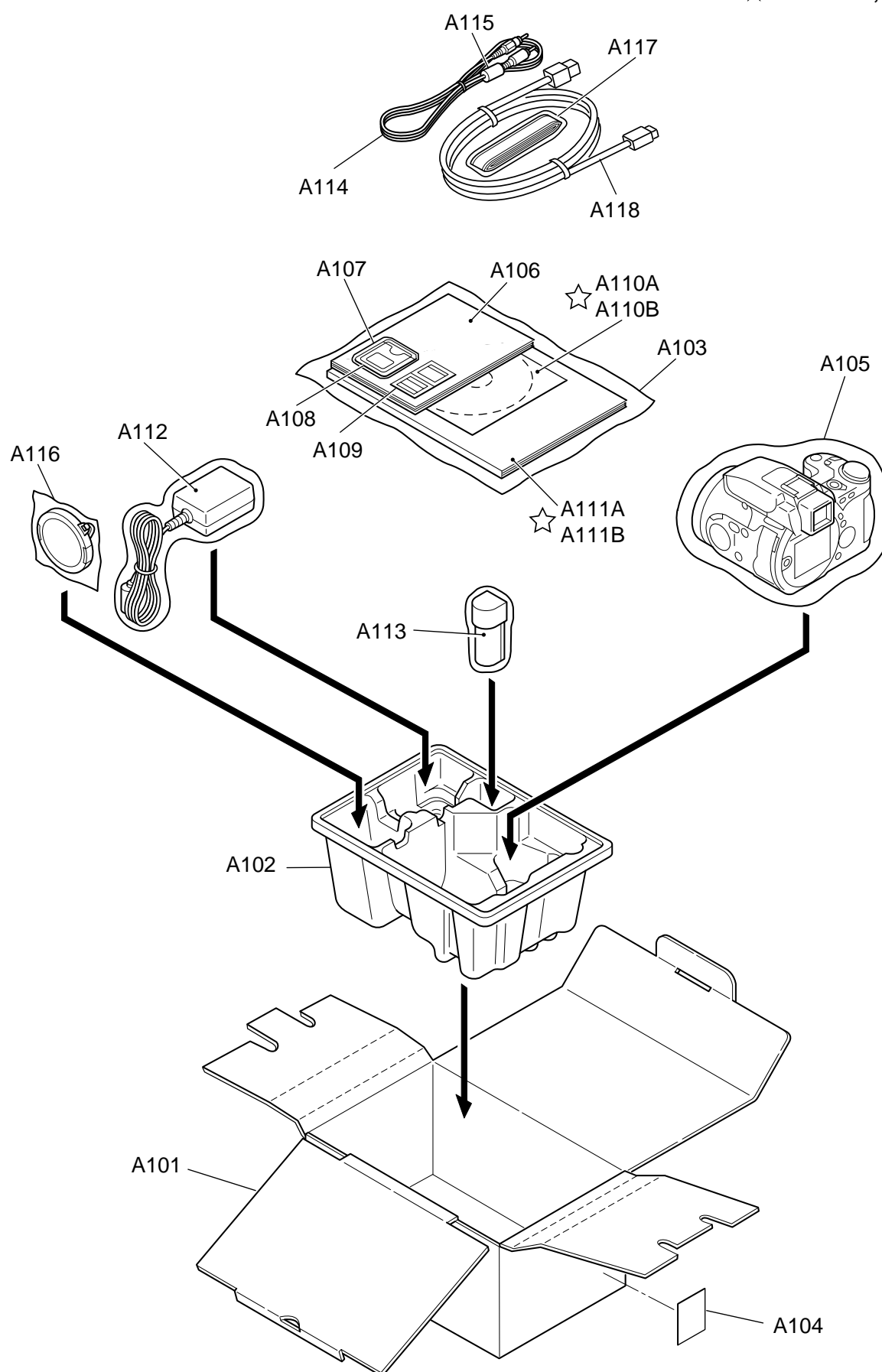
★ Revised 21,Nov,2000

Please use A112A, A113A and A114A by the pair.

Please use A112B, A113B and A114B by the pair.

1. Packing and Accessories EG-Model

★ Revised 21,Nov,2000



FinePix4900ZOOM(E/EG) PARTS LIST 1 Packing and Accessories

Ref. No.	Parts No.	Description	Price	Common	Remark
A101	FZ03964-300	UNITARY BOX			
A102	FZ03919-100	SHEET MOLD		J/U/E/EG-MODEL	
A103	AZF0000-111	BAG PLASTIC NO.11		J/U/E/EG-MODEL	
A104	BB06392-100	LABEL PLAIN 2		U/E/EG-MODEL	
A105	AZF0000-101	LDPE BAG NO.10		J/U/E/EG-MODEL	
A106	BB11855-200	EN MANUAL		U/E/EG-MODEL	ENGLISH
A107	BF02317-200	SSFDC ASSY		U/E/EG-MODEL	16MB
A108	BB04598-400	SSFDC DUST COVER		U/E/EG-MODEL	
A109	BB11327-100	SSFDC LABEL		U/E/EG-MODEL	
★ A110A	FZ03903-100	CD-ROM		U/E/EG-MODEL	1st
★ A110B	FZ03903-101	CD-ROM		U/E/EG-MODEL	2nd
★ A111A	BB10768-300	USB MANUAL1 E		U/E/EG-MODEL	ENGLISH 1st
★ A111B	BB10768-301	USB MANUAL1 E		U/E/EG-MODEL	ENGLISH 2nd
A112	FZ03843-200	ACADAPTER			AC-5VH
A113	FZ03958-100	BATTERY PACK		U/E/EG-MODEL	1300MAH 3.7V
A114	FZ03284-100	VIDEO CABLE		J/U/E/EG-MODEL	RCA PIN-MINI JACK
A115	FZ00363-200	FILTER		J/U/E/EG-MODEL	
A116	BU01815-100	LENS CAP ASSY		J/U/E/EG-MODEL	
A117	BB11931-100	SHOULDER BELT		J/U/E/EG-MODEL	
A118	FZ03529-200	USB CABLE		U/E/EG-MODEL	

★ Revised 21,Nov,2000

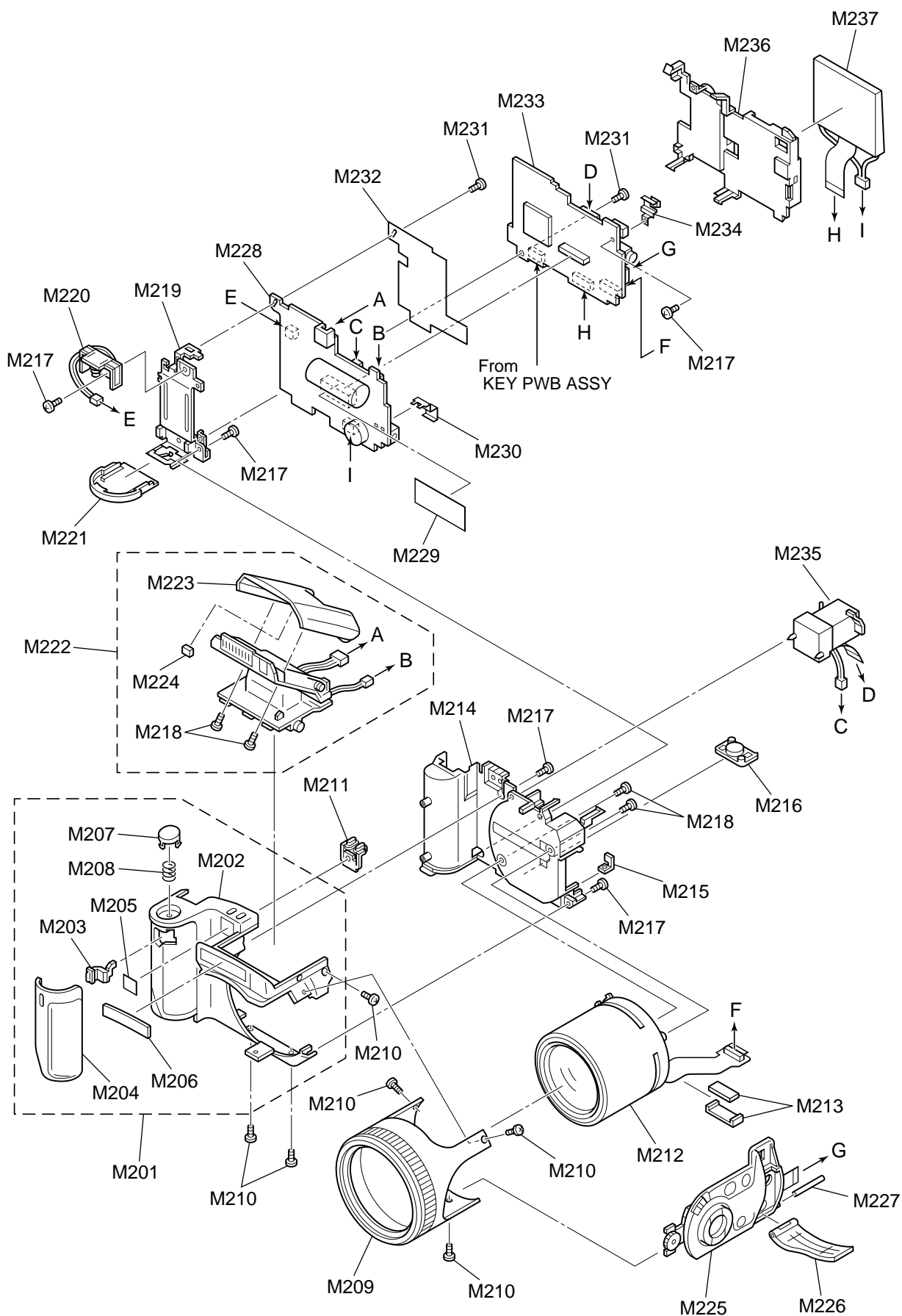
Please use A110A and A111A by the pair.

Please use A110B and A111B by the pair.

2 Mechanical Parts

2. Mechanical Parts

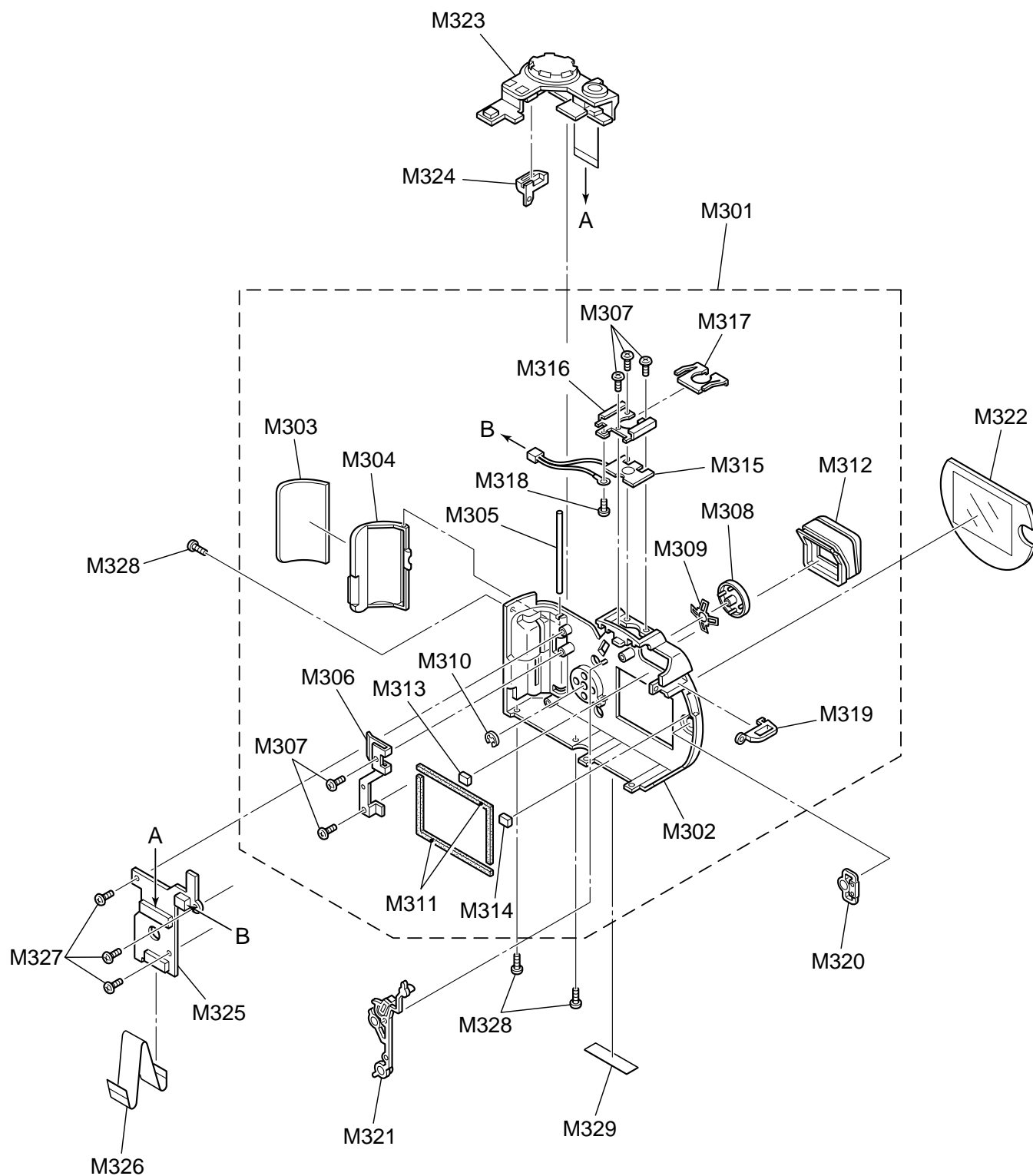
2-1. Cabinet F



Ref. No.	Parts No.	Description	Price	Common	Remark
M201	BU01785-200	F CABI UE ASSY		U/E/EG-MODEL	
M202	BB11590-100	F CABI		J/U/E/EG-MODEL	
M203	BB11591-100	SELF WINDOW		J/U/E/EG-MODEL	
M204	BB11592-100	F GRIP PARTS		J/U/E/EG-MODEL	
M205	BB10746-200	CCD BADGE UE		U/E/EG-MODEL	
M206	BB11813-100	CI BADGE		J/U/E/EG-MODEL	
M207	BB11594-100	RELEASE BUTTON		J/U/E/EG-MODEL	ABS
M208	BB11595-100	ESP(RELEASE)		J/U/E/EG-MODEL	
M209	BU01784-100	LENS CABI ASSY		J/U/E/EG-MODEL	
M210	BB11384-200	BL SCREW M1.7X3.5C		J/U/E/EG-MODEL	
M211	BB11637-100	SELF BUTTON		J/U/E/EG-MODEL	
M212	BF03104-100	LENS CONST		J/U/E/EG-MODEL	With CCD defect data
M213	FZ04022-100	FERRITE CORE		J/U/E/EG-MODEL	
M214	BB11632-100	MAIN FRAME		J/U/E/EG-MODEL	ABS
M215	BB11917-100	PLATE NUT		J/U/E/EG-MODEL	
M216	BB11631-100	TRIPOD SCREW		J/U/E/EG-MODEL	
M217	BB11384-100	BL SCREW M1.7X3.5		J/U/E/EG-MODEL	
M218	ATG1725-0ND	SCREW BT2P17*50B		J/U/E/EG-MODEL	
M219	BU01788-100	BATT FRAME ASSY		J/U/E/EG-MODEL	
M220	FZ03265-100	BATTERY CONNECTOR		J/U/E/EG-MODEL	
M221	BB11628-100	BATTERY COVER		J/U/E/EG-MODEL	PC
M222	BF03098-100	ST ASSY		J/U/E/EG-MODEL	
M223	BB11612-100	ST TOP		J/U/E/EG-MODEL	PC
M224	BB12133-100	ST PORON		J/U/E/EG-MODEL	
M225	FZ03929-100	SIDEKEY ASSY		J/U/E/EG-MODEL	
M226	BB11633-100	JACK COVER		J/U/E/EG-MODEL	PC
M227	BB11634-100	JACK SHAFT		J/U/E/EG-MODEL	
M228	CB0642-A102	DCST PWB ASSY		U/E/EG-MODEL	
M229	BB11896-100	SHEET STROBE		J/U/E/EG-MODEL	
M230	BB11916-100	PLATE GND		J/U/E/EG-MODEL	
M231	BB11640-100	SP SCREW M1.7X3.8 NI		J/U/E/EG-MODEL	
M232	BB12085-100	SHIELD SHEET		J/U/E/EG-MODEL	
M233	CB0641-C101	MAIN PWB ASSY			
M234	BB11814-100	CONTACT PLT		J/U/E/EG-MODEL	
M235	BF03099-100	EVF UNIT		J/U/E/EG-MODEL	
M236	BB11629-100	LCD FRAME		J/U/E/EG-MODEL	ABS
M237	FZ03922-100	LCD		J/U/E/EG-MODEL	

2 Mechanical Parts

2-2. Cabinet R



Ref. No.	Parts No.	Description	Price	Common	Remark
M301	BU01786-100	R CABI ASSY		J/U/E/EG-MODEL	PC
M302	BB11596-100	R CABI		J/U/E/EG-MODEL	
M303	BB11597-100	R GRIP PARTS		J/U/E/EG-MODEL	
M304	BB11599-100	CARD COVER		J/U/E/EG-MODEL	
M305	BB11601-100	SHAFT(CARD)		J/U/E/EG-MODEL	
M306	BB11600-100	PLATE SP		J/U/E/EG-MODEL	
M307	ATA1723-5NN	SCREW 2P17*35 N		J/U/E/EG-MODEL	
M308	BB11606-100	CURSOL BUTTON		J/U/E/EG-MODEL	
M309	BB11607-100	CURSOL SP		J/U/E/EG-MODEL	
M310	ARE2010-CN1	JIS E-RING 2.0		J/U/E/EG-MODEL	
M311	BB11918-100	LCD CUSHION		J/U/E/EG-MODEL	
M312	BB11603-100	FINDER PIECE		J/U/E/EG-MODEL	
M313	BB11919-100	GASKET		J/U/E/EG-MODEL	
M314	BB11977-100	GASKET-3MM		J/U/E/EG-MODEL	
M315	BF03205-100	SHOE ASSY		J/U/E/EG-MODEL	
M316	BB11608-100	SHOE		J/U/E/EG-MODEL	
M317	BB11609-100	SHOE COVER		J/U/E/EG-MODEL	
M318	ATA1722-0NN	SCREW 2P17*20N		J/U/E/EG-MODEL	
M319	BB11602-100	STRAP R		J/U/E/EG-MODEL	
M320	BB11604-100	SHIFT BUTTON		J/U/E/EG-MODEL	
M321	BB11636-100	OPERATE BUTTON		J/U/E/EG-MODEL	
M322	BB11598-100	LCD WINDOW		J/U/E/EG-MODEL	
M323	FZ03928-200	MODE ASSY		U/E/EG-MODEL	
M324	BB11593-100	STRAP L		J/U/E/EG-MODEL	
★ M325	CB0643-A101	KEY PWB ASSY		J/U/E/EG-MODEL	
M326	FZ03931-100	FFC		J/U/E/EG-MODEL	
M327	BB11384-100	BL SCREW M1.7X3.5		J/U/E/EG-MODEL	
M328	BB11384-200	BL SCREW M1.7X3.5C		J/U/E/EG-MODEL	
M329	BB11639-200	PRODUCT LBL		U/E/EG-MODEL	
					KEY - MAIN

★ Revised 21,Nov,2000

3 Electrical Parts

3. Electrical Parts

[NOTE]

The components indicated by mark△are critical for safety.
When indicated parts by reference number,please include the board name.

DCST

Ref.No.	Part No.	Description	Price

	CB0642-A102	DCST PWB ASSY	

		----- BUZZER -----	
BZ691	FZ03230-100	BUZZER	
		----- CAPACITOR -----	
C501	FCB17-105KC	CAPACITOR CC 105PF 10V BK2012	
C502	FCB17-105KC	CAPACITOR CC 105PF 10V BK2012	
C504	FCT17-226MD	CAPACITOR CT 22MF 16V M B	
C505	FCT17-226MD	CAPACITOR CT 22MF 16V M B	
C506	CBF01-103KC	CAPACITOR CC 103PF 25V B K1608	
C507	CBF01-103KC	CAPACITOR CC 103PF 25V B K1608	
C508	CBF01-103KC	CAPACITOR CC 103PF 25V B K1608	
C509	CBF01-103KC	CAPACITOR CC 103PF 25V B K1608	
C510	CBF01-103KC	CAPACITOR CC 103PF 25V B K1608	
C511	CBF01-103KC	CAPACITOR CC 103PF 25V B K1608	
C512	CBF01-103KC	CAPACITOR CC 103PF 25V B K1608	
C513	CBH01-472KC	CAPACITOR 4700PF B K 50V 1608	
C514	FCB18-104KD	CAPACITOR CC 104PF 16V BK1608	
C515	FCB17-105KC	CAPACITOR CC 105PF 10V BK2012	
C516	FCT42-476MC	CAPACITOR CT 47MF 10V M B	
C517	FCB18-104KD	CAPACITOR CC 104PF 16V BK1608	
C518	FCT42-476MC	CAPACITOR CT 47MF 10V M B	
C519	FCT17-226MD	CAPACITOR CT 22MF 16V M B	
C520	FCB29-474KC	CAPACITOR CC 474PF 10V B K1608	
C521	FCB29-474KC	CAPACITOR CC 474PF 10V B K1608	
C523	FCB24-105MB	CAPACITOR CC 105PF6.3V B M1005	
C524	FCB18-104KD	CAPACITOR CC 104PF 16V BK1608	
C525	FCB18-104KD	CAPACITOR CC 104PF 16V BK1608	
C526	FCB24-105MB	CAPACITOR CC 105PF6.3V B M1005	
C527	CBH01-561KC	CAPACITOR 560PF B K 50V 1608	
C528	FCB24-105MB	CAPACITOR CC 105PF6.3V B M1005	
C529	FCT42-476MC	CAPACITOR CT 47MF 10V M B	
C530	FCT17-336MC	CAPACITOR CT 33MF 10V M B	
C531	FCT17-336MC	CAPACITOR CT 33MF 10V M B	
C532	FCB29-474MC	CAPACITOR CC 474PF 10V B M1608	
C533	CBF01-103KC	CAPACITOR CC 103PF 25V B K1608	

Due to standardization, replacement in the parts list may be different from the parts list specified in the circuit or the components used on the set.

SEMICONDUCTORS

In each case, U:u, for example: UA...:uA, UPA...:uPA, UPB...:uPB, UPC...:uPC, UPD...:uPD

Ref.No.	Part No.	Description	Price
C534	CBF01-103KC	CAPACITOR CC 103PF 25V B K1608	
C535	CBF01-103KC	CAPACITOR CC 103PF 25V B K1608	
C536	CBF01-103KC	CAPACITOR CC 103PF 25V B K1608	
C537	CBF01-103KC	CAPACITOR CC 103PF 25V B K1608	
C538	FCT17-475MF	CAPACITOR CT 4.7MF 25V M B	
C539	CBF01-103KC	CAPACITOR CC 103PF 25V B K1608	
C540	FCT17-156MD	CAPACITOR CT 15MF 16V M B	
C541	FCT17-475MF	CAPACITOR CT 4.7MF 25V M B	
C542	CBF01-104KD	CAPACITOR 0.1MF B K 25V 2012	
C543	CBF01-104KD	CAPACITOR 0.1MF B K 25V 2012	
C544	FCT42-476MC	CAPACITOR CT 47MF 10V M B	
C545	CBF01-104KD	CAPACITOR 0.1MF B K 25V 2012	
C546	FCT17-336MC	CAPACITOR CT 33MF 10V M B	
C548	FCT16-106MC	CAPACITOR CT 10MF 10V M A	
C549	FCH15-333GH	CAPACITOR CF 333PF 50V G	
C550	FCT17-336MC	CAPACITOR CT 33MF 10V M B	
C551	CBF01-103KC	CAPACITOR CC 103PF 25V B K1608	
C552	FCT42-476MB	CAPACITOR CT 47MF 6.3V M B	
C553	FCC13-100FN	CAPACITOR CC 100PF 3V F 4520	
C554	FCT17-336MC	CAPACITOR CT 33MF 10V M B	
C561	FCT16-106MC	CAPACITOR CT 10MF 10V M A	
C562	FCB23-335KB	CAPACITOR CC 3.3UF6.3V B K2012	
C570	FCB24-105MB	CAPACITOR CC 105PF6.3V B M1005	
C571	FCB18-104KD	CAPACITOR CC 104PF 16V BK1608	
C575	FCB18-104KD	CAPACITOR CC 104PF 16V BK1608	
C601	FAA03-336MC	CAPACITOR CA 33MF 8V M	
C602	CBD01-333KC	CAPACITOR 0.033MF B K 16V 1608	
C603	CBF01-223KC	CAPACITOR 0.022MF B K 25V 1608	
C604	CBH01-682KC	CAPACITOR 6800PF B K 50V 1608	
C605	CBH01-102KC	CAPACITOR 1000PF B K 50V 1608	
C606	CFF01-104ZC	CAPACITOR CC 104PF 25V FZ1608	
C608	CBF01-103KC	CAPACITOR CC 103PF 25V B K1608	
C609	CFF01-104ZC	CAPACITOR CC 104PF 25V FZ1608	
C610	FCG12-273MM	CAPACITOR CC 273PF250V M3216	
C611	FCG12-273MM	CAPACITOR CC 273PF250V M3216	
C612	CBH01-682KC	CAPACITOR 6800PF B K 50V 1608	
C614	CBH01-102KC	CAPACITOR 1000PF B K 50V 1608	
C615	CFF01-104ZC	CAPACITOR CC 104PF 25V FZ1608	
C616	FCG12-273MM	CAPACITOR CC 273PF250V M3216	
C617	CBD01-473KC	CAPACITOR 0.047MF B K 16V 1608	
C618	FCG12-273MM	CAPACITOR CC 273PF250V M3216	

DCST

Ref.No.	Part No.	Description	Price
C619	FAA27-167KN	CAPACITOR LA 160MF 350V K	
C620	CFF01-104ZC	CAPACITOR CC 104PF 25V FZ1608	
C621	CFF01-104ZC	CAPACITOR CC 104PF 25V FZ1608	
C622	CFF01-104ZC	CAPACITOR CC 104PF 25V FZ1608	
C624	FCT17-226MD	CAPACITOR CT 22MF 16V M B	
C901	FCB18-104KD	CAPACITOR CC 104PF 16V BK1608	
C902	FCB18-104KD	CAPACITOR CC 104PF 16V BK1608	
C903	FCB23-335KB	CAPACITOR CC 3.3UF6.3V B K2012	
C904	FCB23-335KB	CAPACITOR CC 3.3UF6.3V B K2012	
C906	CFD01-105ZD	CAPACITOR CC 105PF 16V FZ2012	
C907	CFF01-104ZC	CAPACITOR CC 104PF 25V FZ1608	
C908	CBF01-153KC	CAPACITOR 0.015MF B K 25V 1608	
C909	CFF01-104ZC	CAPACITOR CC 104PF 25V FZ1608	
----- CONNECTOR -----			
CN501	FGA104-0021	CONNECTOR CJ 2P RN 4.5MM PH	
CN502	FGC118-0701	CONNECTOR CJ 70P BB 0.5MM RV	
CN503	FGA005-0024	CONNECTOR 2P 1.5MM	
CN601	FGA042-0043	CONNECTOR LJ 4P RN 2MM PH	
CN602	FGA058-0021	CONNECTOR CJ 2P RN 1.25MM PN	
CN901	FGA113-0021	CONNECTOR CJ 2P RN 1.5MM PH	
----- DIODE -----			
D501	FQDY0079-01	DIODE VF:0.33V 1STD	
D502	FQDY0079-01	DIODE VF:0.33V 1STD	
D503	FQDY0061-01	DIODE VF:0.55V 1STD	
D504	FQDY0073-01	DIODE VF:0.77V 1STD	
D505	FQDY0073-01	DIODE VF:0.77V 1STD	
D506	FQDY0079-01	DIODE VF:0.33V 1STD	
D507	FQDY0089-01	DIODE VF:0.36V 1STD	
D508	FQDZ0067-03	DIODE VZ:5.6V 1STD	
D602	FQDY0046-01	DIODE STD	
D603	FQDW0002-01	DIODE STD	
D604	FQDY0072-01	DIODE VR:1500V 1STD	
D605	FQDY0072-01	DIODE VR:1500V 1STD	
D606	FQDZ0067-01	DIODE VZ:6.8V 1STD	
D607	FQDW0002-01	DIODE STD	
D608	FQDY0065-01	DIODE VR:400V 1STD	
D691	FQDW0002-01	DIODE STD	
D901	FQDW0002-01	DIODE STD	
D903	FQDY0084-01	DIODE VF:0.6V 1STD	
D904	FQDY0084-01	DIODE VF:0.6V 1STD	
----- FUSE -----			
△ F501	FP00033-253	FUSE 2.5A 32V UL STD	
△ F502	FP00033-253	FUSE 2.5A 32V UL STD	
△ F504	FP00033-153	FUSE 1.5A 32V UL STD	
△ F601	FP00033-253	FUSE 2.5A 32V UL STD	
△ F901	FP00018-253	FUSE 2.5A 125V JIS STD	

Ref.No.	Part No.	Description	Price
----- IC -----			
IC501	FQTY0037-01	IC IDSS:0-MA STD	
IC502	FHA0145-100	IC 1.5-1.5V EIAJ	
IC503	FQTY0037-01	IC IDSS:0-MA STD	
IC504	FQTY0037-01	IC IDSS:0-MA STD	
IC505	FQTY0036-01	IC IDSS:1-UA	
IC506	FQTY0036-01	IC IDSS:1-UA	
IC510	FQHA0381-00	IC OP AMP EIAJ	
IC601	FQTY0037-01	IC IDSS:0-MA STD	
IC602	FHY0012-100	IC FF1121 EIAJ	
IC603	FHA0118-100	IC EEPROM	
IC604	FHA0118-100	IC EEPROM	
IC901	FQTY0019-01	IC IDSS:-1MA—5MA STD	
IC902	FHA0025-100	IC 4.2V EIAJ	
----- JACK -----			
J901	FZ02412-100	JACK POWER	
----- COIL -----			
L501	FLA090-100N	COIL CL 10UH N	
L502	FLA054-100N	COIL CL 10UH N6666	
L503	FLA038-100M	COIL CL 10UH 15% 4540	
L504	FLA038-100M	COIL CL 10UH 15% 4540	
L505	FLA038-100M	COIL CL 10UH 15% 4540	
L506	FLA080-820M	COIL CL 82UH M4848	
L507	FLA080-220M	COIL CL 22UH M4848	
L508	FLA079-680K	COIL CL 68UH K2520	
L509	FLA079-680K	COIL CL 68UH K2520	
L510	FLA079-680K	COIL CL 68UH K2520	
L511	FLA038-100M	COIL CL 10UH 15% 4540	
L512	FLA038-100M	COIL CL 10UH 15% 4540	
L513	FLA080-330M	COIL CL 33UH M4848	
L514	FLA065-100K	COIL CL 10UH K3225	
L522	FLA038-100M	COIL CL 10UH 15% 4540	
----- TRANSISTOR -----			
Q501	FQTN0008-01	TRANSISTOR 10K 2STD	
Q502	FQTW0062-01	TRANSISTOR 47KOHM 2STD	
Q503	FQTD0019-04	TRANSISTOR HFE:270-560	
Q506	FQTW0072-01	TRANSISTOR 10K 10K 2STD	
Q507	FQTC0052-01	TRANSISTOR HFE:400 STD	
Q508	FQTC0052-01	TRANSISTOR HFE:400 STD	
Q509	FQTC0008-04	TRANSISTOR HFE:270-560 1616	
Q510	FQTY0033-01	TRANSISTOR STD	
Q511	FQTC0008-04	TRANSISTOR HFE:270-560 1616	
Q512	FQTA0036-01	TRANSISTOR HFE:100-300 STD	
Q516	FQTC0008-04	TRANSISTOR HFE:270-560 1616	
Q517	FQTY0033-01	TRANSISTOR STD	
Q519	FQTA0036-01	TRANSISTOR HFE:100-300 STD	
Q530	QTA15-773QA	TRANSISTOR HFE:180-390 STD	

3 Electrical Parts

FinePix4900ZOOM(E/EG) PARTS LIST

DCST

Ref.No.	Part No.	Description	Price
Q531	FQTN0008-01	TRANSISTOR 10K 2STD	
Q532	FQTD0024-01	TRANSISTOR HFE:1200 STD	
Q533	FQTW0072-01	TRANSISTOR 10K 10K 2STD	
Q601	FQTP0005-01	TRANSISTOR 10K 2STD	
Q602	FQTD0024-01	TRANSISTOR HFE:1200 STD	
Q603	FQTP0004-01	TRANSISTOR 4.7K 2STD	
Q605	FQTY0016-01	TRANSISTOR SMT STD	
Q691	FQTN0008-01	TRANSISTOR 10K 2STD	
Q901	FQTN0006-01	TRANSISTOR 47K 2STD	
Q902	FQJ0004-01	TRANSISTOR IDSS:-10A STD	
Q903	FQTC0008-04	TRANSISTOR HFE:270-560 1616	
Q904	FQTA0008-01	TRANSISTOR HFE:ALL LANK STD	
Q905	FQTN0008-01	TRANSISTOR 10K 2STD	
Q906	FQTC0008-04	TRANSISTOR HFE:270-560 1616	
Q907	FQTP0005-01	TRANSISTOR 10K 2STD	
Q908	FQTN0008-01	TRANSISTOR 10K 2STD	
Q909	FQTW0062-01	TRANSISTOR 47KOHM 2STD	
----- RESISTOR -----			
R501	FRE017-123F	RESISTOR CR 12K 1/16W F 1608	
R502	FRE017-392F	RESISTOR CR 3.9K 1/16W F 1608	
R503	FRE016-103J	RESISTOR CR 10K 1/16W J 1005	
R506	FRE016-103J	RESISTOR CR 10K 1/16W J 1005	
R507	FRE012-392D	RESISTOR CR 3.9K 1/16W D 1608	
R508	FRE016-103J	RESISTOR CR 10K 1/16W J 1005	
R509	FRE012-123D	RESISTOR CR 12K 1/16W D 1608	
R511	FRE017-100J	RESISTOR CR 10 1/16W J 1608	
R512	FRE016-272J	RESISTOR CR 2.7K 1/16W J 1005	
R513	FRE016-103J	RESISTOR CR 10K 1/16W J 1005	
R514	FRE016-392J	RESISTOR CR 3.9K 1/16W J 1005	
R515	FRE017-271J	RESISTOR CR 270 1/16W J 1608	
R517	FRE016-103J	RESISTOR CR 10K 1/16W J 1005	
R518	FRE017-100J	RESISTOR CR 10 1/16W J 1608	
R519	FRE017-100J	RESISTOR CR 10 1/16W J 1608	
R520	FRE012-273D	RESISTOR CR 27K 1/16W D 1608	
R522	FRE017-392J	RESISTOR CR 3.9K 1/16W J 1608	
R523	FRE016-331J	RESISTOR CR 330 1/16W J 1005	
R524	FRE016-104J	RESISTOR CR 100K 1/16W J 1005	
R525	FRE016-103J	RESISTOR CR 10K 1/16W J 1005	
R526	FRE016-103J	RESISTOR CR 10K 1/16W J 1005	
R528	FRE016-223J	RESISTOR CR 22K 1/16W J 1005	
R529	FRE016-221J	RESISTOR CR 220 1/16W J 1005	
R530	FRE017-100J	RESISTOR CR 10 1/16W J 1608	
R531	FRE016-103J	RESISTOR CR 10K 1/16W J 1005	
R532	FRE016-473J	RESISTOR CR 47K 1/16W J 1005	
R533	FRE017-393J	RESISTOR CR 39K 1/16W J 1608	
R534	FRE017-562F	RESISTOR CR 5.6K 1/16W F 1608	
R535	FRE017-100J	RESISTOR CR 10 1/16W J 1608	
R536	FRE016-103J	RESISTOR CR 10K 1/16W J 1005	

Ref.No.	Part No.	Description	Price
R537	FRE017-332J	RESISTOR CR 3.3K 1/16W J 1608	
R538	FRE016-221J	RESISTOR CR 220 1/16W J 1005	
R539	FRE017-473J	RESISTOR CR 47K 1/16W J 1608	
R540	FRE016-103J	RESISTOR CR 10K 1/16W J 1005	
R541	FRE017-562J	RESISTOR CR 5.6K 1/16W J 1608	
R542	FRE012-682D	RESISTOR CR 6.8K 1/16W D 1608	
R543	FRE016-104J	RESISTOR CR 100K 1/16W J 1005	
R544	FRE016-104J	RESISTOR CR 100K 1/16W J 1005	
R546	FRE017-100J	RESISTOR CR 10 1/16W J 1608	
R547	FRE017-121J	RESISTOR CR 120 1/16W J 1608	
R548	FRE017-100J	RESISTOR CR 10 1/16W J 1608	
R549	FRE016-103J	RESISTOR CR 10K 1/16W J 1005	
R550	FRE017-102J	RESISTOR CR 1K 1/16W J 1608	
R551	FRE016-682J	RESISTOR CR 6.8K 1/16W J 1005	
R552	FRE016-103J	RESISTOR CR 10K 1/16W J 1005	
R553	FRE018-680J	RESISTOR CR 68 1/10W J 2012	
R554	FRE018-680J	RESISTOR CR 68 1/10W J 2012	
R555	FRE012-331D	RESISTOR CR 330 1/16W D 1608	
R556	FRE017-000J	RESISTOR CR 0 1/16W J 1608	
R557	FRE016-471J	RESISTOR CR 470 1/16W J 1005	
R558	FRE016-103J	RESISTOR CR 10K 1/16W J 1005	
R559	FRE017-102J	RESISTOR CR 1K 1/16W J 1608	
R560	FRE016-682J	RESISTOR CR 6.8K 1/16W J 1005	
R561	FRE016-103J	RESISTOR CR 10K 1/16W J 1005	
R562	FRE018-121J	RESISTOR CR 120 1/10W J 2012	
R563	FRE018-121J	RESISTOR CR 120 1/10W J 2012	
R564	FRE016-471J	RESISTOR CR 470 1/16W J 1005	
R567	FRE017-100J	RESISTOR CR 10 1/16W J 1608	
R570	FRE016-103J	RESISTOR CR 10K 1/16W J 1005	
R571	FRE017-152J	RESISTOR CR 1.5K 1/16W J 1608	
R573	FRE017-222J	RESISTOR CR 2.2K 1/16W J 1608	
R574	FRE017-220J	RESISTOR CR 22 1/16W J 1608	
R581	FRE016-000J	RESISTOR CR 0 1/16W J 1005	
R582	FRE016-473J	RESISTOR CR 47K 1/16W J 1005	
R590	FRE016-104J	RESISTOR CR 100K 1/16W J 1005	
R591	FRE016-104J	RESISTOR CR 100K 1/16W J 1005	
R594	FRE016-331J	RESISTOR CR 330 1/16W J 1005	
R595	FRE017-150F	RESISTOR CR 15 1/16W F 1608	
R596	FRE012-392D	RESISTOR CR 3.9K 1/16W D 1608	
R597	FRE012-103D	RESISTOR CR 10K 1/16W D 1608	
R598	FRE017-471J	RESISTOR CR 470 1/16W J 1608	
R601	FRE016-473J	RESISTOR CR 47K 1/16W J 1005	
R602	FRE016-473J	RESISTOR CR 47K 1/16W J 1005	
R603	FRY0005-600	RESISTOR CR 0.15 1/2W G 3125	
R604	FRE017-151J	RESISTOR CR 150 1/16W J 1608	
R605	FRE016-102J	RESISTOR CR 1K 1/16W J 1005	
R606	FRE017-471J	RESISTOR CR 470 1/16W J 1608	
R607	FRE017-123F	RESISTOR CR 12K 1/16W F 1608	
R608	FRE018-561J	RESISTOR CR 560 1/10W J 2012	
R609	FRE017-393F	RESISTOR CR 39K 1/16W F 1608	

DCST

MAIN

Ref.No.	Part No.	Description	Price
R611	FRE017-363F	RESISTOR CR 36K 1/16W F1608	
R612	FRC029-825F	RESISTOR CR 8.2M 0.1W F2012	
R613	FRE016-221J	RESISTOR CR 220 1/16W J 1005	
R614	FRE017-390J	RESISTOR CR 39 1/16W J 1608	
R615	FRE016-225J	RESISTOR CR 2.2M 1/16W J 1005	
R616	FRC029-225J	RESISTOR CR 2.2M 0.1W J2012	
R617	FRE016-223J	RESISTOR CR 22K 1/16W J 1005	
R620	FRE016-184J	RESISTOR CR 180K 1/16W J 1005	
R622	FRC029-224J	RESISTOR CR 220K 0.1W J2012	
R623	FRE017-472F	RESISTOR CR 4.7K 1/16W F 1608	
R624	FRE017-332F	RESISTOR CR 3.3K 1/16W F 1608	
R625	FRE016-222J	RESISTOR CR 2.2K 1/16W J 1005	
R628	FRE016-333J	RESISTOR CR 33K 1/16W J 1005	
R630	FRE016-104J	RESISTOR CR 100K 1/16W J 1005	
R631	FRE016-104J	RESISTOR CR 100K 1/16W J 1005	
R632	FRE016-104J	RESISTOR CR 100K 1/16W J 1005	
R633	FRE016-333J	RESISTOR CR 33K 1/16W J 1005	
R691	FRE016-152J	RESISTOR CR 1.5K 1/16W J 1005	
R692	FRE017-100J	RESISTOR CR 10 1/16W J 1608	
R901	FRE016-104J	RESISTOR CR 100K 1/16W J 1005	
R902	FRE016-102J	RESISTOR CR 1K 1/16W J 1005	
R903	FRE017-153F	RESISTOR CR 15K 1/16W F 1608	
R904	FRY0005-700	RESISTOR CR 0.18 1/2W G 3125	
R905	FRY0005-700	RESISTOR CR 0.18 1/2W G 3125	
R907	FRE016-102J	RESISTOR CR 1K 1/16W J 1005	
R908	FRE016-103J	RESISTOR CR 10K 1/16W J 1005	
R909	FRE016-201J	RESISTOR CR 200 1/16W J 1005	
R910	FRE016-102J	RESISTOR CR 1K 1/16W J 1005	
R911	FRE016-103J	RESISTOR CR 10K 1/16W J 1005	
R912	FRE016-271J	RESISTOR CR 270 1/16W J 1005	
R913	FRE017-182F	RESISTOR CR 1.8K 1/16W F 1608	
R914	FRE016-102J	RESISTOR CR 1K 1/16W J 1005	
R915	FRE017-221F	RESISTOR CR 220 1/16W F 1608	
R916	FRE016-000J	RESISTOR CR 0 1/16W J 1005	
R917	FRE016-103J	RESISTOR CR 10K 1/16W J 1005	
R918	FRE016-243J	RESISTOR CR 24K 1/16W J 1005	
R919	FRE016-333J	RESISTOR CR 33K 1/16W J 1005	
----- TRANSFORMER -----			
△T501	FLYT088-100	TRANSFORMER 12.1V STD	
△T502	FLYT086-100	TRANSFORMER "16V,-8V STD"	
△T503	FLYT075-100	TRANSFORMER BACK LIGTH STD	
△T601	FLYT077-100	TRANSFORMER FLASH STD	
----- GASKET -----			
TP901	FZ02769-100	GASKET	
TP902	FZ02769-100	GASKET	

Ref.No.	Part No.	Description	Price

CB0641-C101 MAIN PWB ASSY			

----- BATTERY -----			
BZ302	FZ03292-100	BATTERY BACK UP	
----- CAPACITOR -----			
C101	FCT16-106MC	CAPACITOR CT 10MF 10V M A	
C102	CBC01-224KC	CAPACITOR CC 224PF 10V K1608	
C103	FCT16-106MC	CAPACITOR CT 10MF 10V M A	
C104	FCT17-226MD	CAPACITOR CT 22MF 16V M B	
C105	FCT45-686MC	CAPACITOR CT 68MF 10V M C	
C106	FCT17-106ME	CAPACITOR CT 10MF 20V M B	
C107	CFH01-102ZC	CAPACITOR 1000PF F Z 50V 1608	
C108	CFF01-104ZC	CAPACITOR CC 104PF 25V FZ1608	
C111	FCT16-106MC	CAPACITOR CT 10MF 10V M A	
C115	FCT16-105MG	CAPACITOR CT 1MF 35V M A	
C116	CFF01-104ZC	CAPACITOR CC 104PF 25V FZ1608	
C118	CFF01-104ZC	CAPACITOR CC 104PF 25V FZ1608	
C119	CFF01-104ZC	CAPACITOR CC 104PF 25V FZ1608	
C120	CBH01-152KC	CAPACITOR 1500PF B K 50V 1608	
C121	CFF01-104ZC	CAPACITOR CC 104PF 25V FZ1608	
C123	CFF01-104ZC	CAPACITOR CC 104PF 25V FZ1608	
C124	CFF01-104ZC	CAPACITOR CC 104PF 25V FZ1608	
C125	CFF01-104ZC	CAPACITOR CC 104PF 25V FZ1608	
C126	CFF01-104ZC	CAPACITOR CC 104PF 25V FZ1608	
C130	CFF01-104ZC	CAPACITOR CC 104PF 25V FZ1608	
C132	CFF01-104ZC	CAPACITOR CC 104PF 25V FZ1608	
C133	CBF01-273KD	CAPACITOR 0.027MF B K 25V 2012	
C134	CFF01-104ZC	CAPACITOR CC 104PF 25V FZ1608	
C135	CFF01-104ZC	CAPACITOR CC 104PF 25V FZ1608	
C136	FCT17-476MB	CAPACITOR CT 47MF 6.3V M B	
C137	CCH01-220JC	CAPACITOR 22PF CH J 50V 1608	
C138	CFF01-104ZC	CAPACITOR CC 104PF 25V FZ1608	
C139	CFF01-104ZC	CAPACITOR CC 104PF 25V FZ1608	
C140	CFF01-104ZC	CAPACITOR CC 104PF 25V FZ1608	
C141	CFF01-104ZC	CAPACITOR CC 104PF 25V FZ1608	
C142	CFF01-104ZC	CAPACITOR CC 104PF 25V FZ1608	
C143	CFF01-104ZC	CAPACITOR CC 104PF 25V FZ1608	
C144	CFF01-104ZC	CAPACITOR CC 104PF 25V FZ1608	
C145	CFF01-104ZC	CAPACITOR CC 104PF 25V FZ1608	
C146	CFH01-103ZC	CAPACITOR 0.01MF F Z 50V 1608	
C149	CBF01-104KD	CAPACITOR 0.1MF B K 25V 2012	
C150	CFF01-104ZC	CAPACITOR CC 104PF 25V FZ1608	
C151	CFF01-104ZC	CAPACITOR CC 104PF 25V FZ1608	
C152	CBD01-473KC	CAPACITOR 0.047MF B K 16V 1608	
C154	CFF01-104ZC	CAPACITOR CC 104PF 25V FZ1608	

3 Electrical Parts

FinePix4900ZOOM(E/EG) PARTS LIST

MAIN

Ref.No.	Part No.	Description	Price
C157	CFF01-104ZC	CAPACITOR CC 104PF 25V FZ1608	
C158	CFF01-104ZC	CAPACITOR CC 104PF 25V FZ1608	
C159	FCT17-226MB	CAPACITOR CT 22MF 6.3V M B	
C160	FCT17-226MB	CAPACITOR CT 22MF 6.3V M B	
C161	FCT17-226MB	CAPACITOR CT 22MF 6.3V M B	
C162	CCH01-471JC	CAPACITOR 470PF CH J 50V 1608	
C163	CFH01-102ZC	CAPACITOR 1000PF F Z 50V 1608	
C201	CCH01-101JC	CAPACITOR CC 101PF50V CH J1608	
C202	CCH01-560JC	CAPACITOR 56PF CH J 50V 1608	
C203	CCH01-560JC	CAPACITOR 56PF CH J 50V 1608	
C204	CCH01-560JC	CAPACITOR 56PF CH J 50V 1608	
C205	FCT19-106MB	CAPACITOR CT 10MF 6.3V M P	
C208	FCB18-104KD	CAPACITOR CC 104PF 16V BK1608	
C209	FCB18-104KD	CAPACITOR CC 104PF 16V BK1608	
C210	FCB17-105KC	CAPACITOR CC 105PF 10V BK2012	
C211	CFH01-473ZC	CAPACITOR 0.047MF F Z 50V 1608	
C212	CBF01-223KC	CAPACITOR 0.022MF B K 25V 1608	
C213	CFD01-334ZD	CAPACITOR CC 334PF 16V FZ2012	
C214	CFH01-103ZC	CAPACITOR 0.01MF F Z 50V 1608	
C215	CFH01-103ZC	CAPACITOR 0.01MF F Z 50V 1608	
C216	FCB17-105KC	CAPACITOR CC 105PF 10V BK2012	
C217	CFH01-103ZC	CAPACITOR 0.01MF F Z 50V 1608	
C218	FCT17-106ME	CAPACITOR CT 10MF 20V M B	
C219	CFH01-103ZC	CAPACITOR 0.01MF F Z 50V 1608	
C220	CBD01-474KD	CAPACITOR CC 474PF 16V B K2012	
C221	CFH01-103ZC	CAPACITOR 0.01MF F Z 50V 1608	
C222	CBD01-474KD	CAPACITOR CC 474PF 16V B K2012	
C223	CBD01-474KD	CAPACITOR CC 474PF 16V B K2012	
C224	FCT16-335MB	CAPACITOR CT 3.3MF 6.3V M A	
C225	CBH01-682KC	CAPACITOR 6800PF B K 50V 1608	
C226	CBD01-474KD	CAPACITOR CC 474PF 16V B K2012	
C227	FCT17-336MC	CAPACITOR CT 33MF 10V M B	
C228	FCT17-336MC	CAPACITOR CT 33MF 10V M B	
C229	CFF01-104ZC	CAPACITOR CC 104PF 25V FZ1608	
C230	CFF01-104ZC	CAPACITOR CC 104PF 25V FZ1608	
C231	FCB17-105KC	CAPACITOR CC 105PF 10V BK2012	
C232	FCB18-104KD	CAPACITOR CC 104PF 16V BK1608	
C303	CCH01-330JC	CAPACITOR 33PF CH J 50V 1608	
C304	CFF01-104ZC	CAPACITOR CC 104PF 25V FZ1608	
C305	CFF01-104ZC	CAPACITOR CC 104PF 25V FZ1608	
C306	CCH01-8R0DC	CAPACITOR 8PF CH D 50V 1608	
C307	CFF01-104ZC	CAPACITOR CC 104PF 25V FZ1608	
C308	FCT19-226MA	CAPACITOR CT 22MF 4V M P	
C309	CCH01-8R0DC	CAPACITOR 8PF CH D 50V 1608	
C310	CFF01-104ZC	CAPACITOR CC 104PF 25V FZ1608	
C311	CFF01-104ZC	CAPACITOR CC 104PF 25V FZ1608	
C312	FCT19-106MB	CAPACITOR CT 10MF 6.3V M P	
C313	CFF01-104ZC	CAPACITOR CC 104PF 25V FZ1608	
C315	CFF01-104ZC	CAPACITOR CC 104PF 25V FZ1608	
C317	FCT19-106MB	CAPACITOR CT 10MF 6.3V M P	

Ref.No.	Part No.	Description	Price
C318	CFF01-104ZC	CAPACITOR CC 104PF 25V FZ1608	
C320	CFH01-103ZC	CAPACITOR 0.01MF F Z 50V 1608	
C321	CFF01-104ZC	CAPACITOR CC 104PF 25V FZ1608	
C323	FCT19-106MB	CAPACITOR CT 10MF 6.3V M P	
C324	CFF01-104ZC	CAPACITOR CC 104PF 25V FZ1608	
C325	CFC01-105ZC	CAPACITOR CC 105PF 10V FZ1608	
C326	CFF01-104ZC	CAPACITOR CC 104PF 25V FZ1608	
C327	CFF01-104ZC	CAPACITOR CC 104PF 25V FZ1608	
C328	CFF01-104ZC	CAPACITOR CC 104PF 25V FZ1608	
C329	CFF01-104ZC	CAPACITOR CC 104PF 25V FZ1608	
C330	CFF01-104ZC	CAPACITOR CC 104PF 25V FZ1608	
C331	CFF01-104ZC	CAPACITOR CC 104PF 25V FZ1608	
C332	CFF01-104ZC	CAPACITOR CC 104PF 25V FZ1608	
C333	CFF01-104ZC	CAPACITOR CC 104PF 25V FZ1608	
C334	CFF01-104ZC	CAPACITOR CC 104PF 25V FZ1608	
C335	FCB17-105KC	CAPACITOR CC 105PF 10V BK2012	
C336	FCB17-105KC	CAPACITOR CC 105PF 10V BK2012	
C337	CFH01-103ZC	CAPACITOR 0.01MF F Z 50V 1608	
C338	CBF01-103KC	CAPACITOR CC 103PF 25V B K1608	
C339	CFF01-104ZC	CAPACITOR CC 104PF 25V FZ1608	
C340	CFH01-102ZC	CAPACITOR 1000PF F Z 50V 1608	
C341	CFF01-104ZC	CAPACITOR CC 104PF 25V FZ1608	
C342	CFF01-104ZC	CAPACITOR CC 104PF 25V FZ1608	
C343	CFF01-104ZC	CAPACITOR CC 104PF 25V FZ1608	
C345	CFF01-104ZC	CAPACITOR CC 104PF 25V FZ1608	
C346	CFF01-104ZC	CAPACITOR CC 104PF 25V FZ1608	
C347	FCT19-106MB	CAPACITOR CT 10MF 6.3V M P	
C348	CFF01-104ZC	CAPACITOR CC 104PF 25V FZ1608	
C349	CFF01-104ZC	CAPACITOR CC 104PF 25V FZ1608	
C350	CFC01-105ZC	CAPACITOR CC 105PF 10V FZ1608	
C354	CFF01-104ZC	CAPACITOR CC 104PF 25V FZ1608	
C355	CFF01-104ZC	CAPACITOR CC 104PF 25V FZ1608	
C356	FCT19-226MA	CAPACITOR CT 22MF 4V M P	
C358	CFF01-104ZC	CAPACITOR CC 104PF 25V FZ1608	
C359	CFF01-104ZC	CAPACITOR CC 104PF 25V FZ1608	
C360	CFC01-105ZC	CAPACITOR CC 105PF 10V FZ1608	
C362	CFF01-104ZC	CAPACITOR CC 104PF 25V FZ1608	
C363	CFC01-105ZC	CAPACITOR CC 105PF 10V FZ1608	
C364	CFC01-105ZC	CAPACITOR CC 105PF 10V FZ1608	
C365	FCT19-106MB	CAPACITOR CT 10MF 6.3V M P	
C366	FCT19-226MA	CAPACITOR CT 22MF 4V M P	
C367	CFC01-105ZC	CAPACITOR CC 105PF 10V FZ1608	
C368	CFC01-105ZC	CAPACITOR CC 105PF 10V FZ1608	
C371	CFF01-104ZC	CAPACITOR CC 104PF 25V FZ1608	
C372	CFF01-104ZC	CAPACITOR CC 104PF 25V FZ1608	
C378	CBD01-334KD	CAPACITOR CC 334PF 16V BK2012	
C385	CFH01-103ZC	CAPACITOR 0.01MF F Z 50V 1608	
C387	CFC01-105ZC	CAPACITOR CC 105PF 10V FZ1608	
C397	CFH01-103ZC	CAPACITOR 0.01MF F Z 50V 1608	
C399	FCT17-107MA	CAPACITOR CT 100MF 4V M B2	

Ref.No.	Part No.	Description	Price
C400	FCT17-336MA	CAPACITOR CT 33MF 4V M B	
C402	CFH01-102ZC	CAPACITOR 1000PF F Z 50V 1608	
C403	FCT19-106MB	CAPACITOR CT 10MF 6.3V M P	
C404	CFF01-104ZC	CAPACITOR CC 104PF 25V FZ1608	
C405	CFF01-104ZC	CAPACITOR CC 104PF 25V FZ1608	
C412	CFF01-104ZC	CAPACITOR CC 104PF 25V FZ1608	
C413	CFF01-104ZC	CAPACITOR CC 104PF 25V FZ1608	
C414	CFF01-104ZC	CAPACITOR CC 104PF 25V FZ1608	
C415	CCH01-5R0CC	CAPACITOR 5PF CH C 50V 1608	
C416	CCH01-3R0CC	CAPACITOR 3PF CJ C 50V 1608	
C417	FCT16-476MA	CAPACITOR CT 47MF 4V M A	
C418	FCB18-104KD	CAPACITOR CC 104PF 16V BK1608	
C419	FCT16-105MF	CAPACITOR CT 1MF 25V M A	
C420	CBH01-152KC	CAPACITOR 1500PF B K 50V 1608	
C422	CCH01-270JC	CAPACITOR 27PF CH J 50V 1608	
C423	FCT42-476MC	CAPACITOR CT 47MF 10V M B	
C424	FCT16-335MB	CAPACITOR CT 3.3MF 6.3V M A	
C425	FCT17-156MD	CAPACITOR CT 15MF 16V M B	
C426	CBC01-224KC	CAPACITOR CC 224PF 10V K1608	
C427	FCT16-106MC	CAPACITOR CT 10MF 10V M A	
C429	FCB18-104KD	CAPACITOR CC 104PF 16V BK1608	
C430	CBD01-474KD	CAPACITOR CC 474PF 16V B K2012	
C431	FCB18-104KD	CAPACITOR CC 104PF 16V BK1608	
C432	CFH01-103ZC	CAPACITOR 0.01MF F Z 50V 1608	
----- CONNECTOR -----			
CN101	FGC070-0503	CONNECTOR CJ 50P BN 0.5MM PV	
CN201	FGB066-0241	CONNECTOR CJ 24P SN 0.5MM NH	
CN202	FGB066-0221	CONNECTOR CJ 22P FN 0.5MM NH	
CN302	FGY043-0241	CONNECTOR CJ 24P B 1.1MM NH	
CN303	FGC119-0701	CONNECTOR CJ 70P BB 0.5MM PV	
CN304	FGB068-0201	CONNECTOR CJ 20P FN 0.5MM NH	
CN305	FGB031-0141	CONNECTOR CJ 14P FN 0.5MM NV	
----- JACK -----			
CN301	FZ03803-100	JACK USB STD	
J301	FZ02847-100	JACK MINI JACK 4P	
----- DIODE -----			
D101	FQDY0046-01	DIODE STD	
D102	FQDY0046-01	DIODE STD	
D104	FQDZ0067-01	DIODE VZ:6.8V 1 STD	
D105	FQDZ0067-01	DIODE VZ:6.8V 1 STD	
D301	FQDW0030-01	DIODE VZ:6.8V 2 STD	
D304	FQDZ0067-02	DIODE VZ:8.2V 1 STD	
D305	FQDZ0067-01	DIODE VZ:6.8V 1 STD	
D306	FQDZ0067-02	DIODE VZ:8.2V 1 STD	
D312	FQDZ0067-01	DIODE VZ:6.8V 1 STD	
D320	FQDY0046-01	DIODE STD	
D321	FQDY0089-01	DIODE VF:0.36V 1 STD	

Ref.No.	Part No.	Description	Price
D323	FQDY0046-01	DIODE STD	
D324	FQDY0055-01	DIODE VF:0.5V 1 STD	
D325	FQDY0055-01	DIODE VF:0.5V 1 STD	
D326	FQDZ0067-01	DIODE VZ:6.8V 1 STD	
----- FUSE -----			
△F301	FP00033-502	FUSE 0.5A 32V ULSTD	
△F302	FP00033-502	FUSE 0.5A 32V ULSTD	
----- GASKET -----			
G301	FZ02769-100	GASKET	
G302	FZ02769-100	GASKET	
G303	FZ02769-100	GASKET	
----- IC -----			
IC101	FHA0146-100	IC V. REG.	
IC104	FHA0166-100	IC MOTOR DRIVER	
IC105	FQHA0478-00	IC	
IC106	FHA0017-100	IC CCD DRIVER	
IC107	FHA0036-100	IC OP AMP 2 EIAJ	
IC108	FQHA0461-00	IC EIAJ	
IC109	FHA0083-100	IC PROCESS	N.S
IC110	FHA0084-100	IC SHUTTER DRIVER	
IC111	FQHA0484-00	IC 12CH D/A CONV.	
IC201	FHA0149-100	IC EIAJ	
IC202	FHA0116-100	IC V. REG.	
IC301	FHD0014-100	IC INV	
IC302	FHA0080-100	IC USB CONT.	
IC303	FQHD0283-00	IC BUFFER	
IC304	FHA0106-100	IC 1.24-12V EIAJ	
IC306	FHA0116-100	IC V. REG.	
IC307	FQHD0194-00	IC INV	
IC308	FHM0106-100	IC DRAM 16MBYTE	
IC309	FHY0014-100	IC SCS2D	N.S
IC311	FHM0106-100	IC DRAM 16MBYTE	
IC312	FHM0103-100	IC EEPROM 256KBIT EIAJ	
IC313	FHD0007-100	IC OR	
IC315	FHD0006-100	IC NOR	
IC316	FHM0272-100	IC PROM 1000KBYTE	
IC317	FHD0008-100	IC AND	
IC318	FHA0112-H00	IC 2.7V EIAJ	
IC320	FHD0008-100	IC AND	
IC325	FHA0041-100	IC 2.5V V-DET	
IC326	FHA0168-100	IC PAL	
IC327	FHA0163-100	IC BACKUP/VIDEO COMP IC	
IC328	FHA0056-100	IC V. REG.	
IC329	FHA0178-100	IC RESET 4.2V EIAJ	
IC330	FHA0041-500	IC 3.0V EIAJ	

3 Electrical Parts

FinePix4900ZOOM(E/EG) PARTS LIST

MAIN

Ref.No.	Part No.	Description		Price
----- COIL -----				
L101	FLA065-220K	COIL	CL 22UH K3225	
L102	FLA038-100M	COIL	CL 10UH 15% 4540	
L104	FLA091-680K	COIL	CL 68UH K2520	
L105	FLA091-680K	COIL	CL 68UH K2520	
L201	FLA065-220K	COIL	CL 22UH K3225	
L304	FLA065-2R2M	COIL	CL 2.2UH M3225	
L305	FLA065-220K	COIL	CL 22UH K3225	
L312	FLA065-2R2M	COIL	CL 2.2UH M3225	
L313	FLA065-220K	COIL	CL 22UH K3225	
L316	FLA065-2R2M	COIL	CL 2.2UH M3225	
L317	FLA065-2R2M	COIL	CL 2.2UH M3225	
L327	FLA080-390M	COIL	CL 39UH M4848	
L328	FLA089-120J	COIL	CL 12UH J2520	
----- FERRITE BEADS -----				
FL301	FLBZ084-100	FERRITE BEADS	USB LINE FILTER	
L103	FLBZ0029-00	FERRITE BEADS	75 AT 100MHZ STD	
L106	FLBZ082-100	FERRITE BEADS	EMI STD	
L107	FLBZ0024-00	FERRITE BEADS	140 AT 50MHZ STD	
L108	FLBZ104-100	FERRITE BEADS	STD	
L109	FLBZ104-100	FERRITE BEADS	STD	
L301	FLBZ0025-00	FERRITE BEADS	600 AT 20MHZ STD	
L302	FLBZ0054-00	FERRITE BEADS	60OHM STD	
L303	FLBZ085-200	FERRITE BEADS	STD	
L306	FLBZ0029-00	FERRITE BEADS	75 AT 100MHZ STD	
L307	FLBZ0029-00	FERRITE BEADS	75 AT 100MHZ STD	
L308	FLBZ0029-00	FERRITE BEADS	75 AT 100MHZ STD	
L309	FLBZ0029-00	FERRITE BEADS	75 AT 100MHZ STD	
L311	FLBZ085-200	FERRITE BEADS	STD	
L314	FLBZ085-200	FERRITE BEADS	STD	
L315	FLBZ085-200	FERRITE BEADS	STD	
L321	FLBZ0025-00	FERRITE BEADS	600 AT 20MHZ STD	
L323	FLBZ0029-00	FERRITE BEADS	75 AT 100MHZ STD	
L324	FLBZ082-100	FERRITE BEADS	EMI STD	
L325	FLBZ0029-00	FERRITE BEADS	75 AT 100MHZ STD	
L326	FLBZ0029-00	FERRITE BEADS	75 AT 100MHZ STD	
L330	FLBZ102-100	FERRITE BEADS	STD	
L331	FLBZ102-100	FERRITE BEADS	STD	
L332	FLBZ102-100	FERRITE BEADS	STD	
L333	FLBZ102-100	FERRITE BEADS	STD	
L334	FLBZ102-100	FERRITE BEADS	STD	
L335	FLBZ102-100	FERRITE BEADS	STD	
L336	FLBZ102-100	FERRITE BEADS	STD	
----- TRANSISTOR -----				
IC331	FQTY0038-01	TRANSISTOR	PNP&FET STD	
Q101	FQTN0008-01	TRANSISTOR	10K 2 STD	
Q102	FQTN0008-01	TRANSISTOR	10K 2 STD	
Q103	FQTN0008-01	TRANSISTOR	10K 2 STD	

Ref.No.	Part No.	Description		Price
Q104	FQTY0033-01	TRANSISTOR	STD	
Q105	FQTC0008-01	TRANSISTOR	HFE:ALL RANK STD	
Q106	FQTA0024-01	TRANSISTOR	HFE:ALL RANK STD	
Q107	FQTA0018-03	TRANSISTOR	HFE:200-400	
Q108	FQTN0008-01	TRANSISTOR	10K 2 STD	
Q203	FQTA0008-01	TRANSISTOR	HFE:ALL RANK STD	
Q204	FQTA0008-01	TRANSISTOR	HFE:ALL RANK STD	
Q205	FQTA0008-01	TRANSISTOR	HFE:ALL RANK STD	
Q206	FQTW0063-01	TRANSISTOR	NPN-PNP STD	
Q207	FQTW0063-01	TRANSISTOR	NPN-PNP STD	
Q301	FQTP0033-01	TRANSISTOR	4.7K STD	
Q302	FQTA0008-01	TRANSISTOR	HFE:ALL RANK STD	
Q303	FQTA0008-01	TRANSISTOR	HFE:ALL RANK STD	
Q304	FQTA0008-01	TRANSISTOR	HFE:ALL RANK STD	
Q305	FQTA0008-01	TRANSISTOR	HFE:ALL RANK STD	
Q306	QTA15-773QA	TRANSISTOR	HFE:180-390 STD	
Q309	FQTP0005-01	TRANSISTOR	10K 2 STD	
Q310	FQTN0008-01	TRANSISTOR	10K 2 STD	
Q313	FQTP0005-01	TRANSISTOR	10K 2 STD	
Q314	FQTP0005-01	TRANSISTOR	10K 2 STD	
Q318	FQDW0033-01	TRANSISTOR	VZ:6.8V 4 STD	
Q319	FQTP0005-01	TRANSISTOR	10K 2 STD	
Q320	FQTW0068-01	TRANSISTOR	NPN-NPN STD	
----- RESISTOR -----				
R101	FRE016-223J	RESISTOR	CR 22K 1/16W J 1005	
R102	FRE016-333J	RESISTOR	CR 33K 1/16W J 1005	
R103	FRE016-331J	RESISTOR	CR 330 1/16W J 1005	
R104	FRE016-331J	RESISTOR	CR 330 1/16W J 1005	
R105	FRE016-331J	RESISTOR	CR 330 1/16W J 1005	
R106	FRE016-331J	RESISTOR	CR 330 1/16W J 1005	
R107	FRE016-223J	RESISTOR	CR 22K 1/16W J 1005	
R108	FRE016-333J	RESISTOR	CR 33K 1/16W J 1005	
R109	FRE016-223J	RESISTOR	CR 22K 1/16W J 1005	
R110	FRE016-333J	RESISTOR	CR 33K 1/16W J 1005	
R111	FRE016-223J	RESISTOR	CR 22K 1/16W J 1005	
R112	FRE016-333J	RESISTOR	CR 33K 1/16W J 1005	
R114	FRE016-104J	RESISTOR	CR 100K 1/16W J 1005	
R118	FRE017-103J	RESISTOR	CR 10K 1/16W J 1608	
R122	FRE017-102J	RESISTOR	CR 1K 1/16W J 1608	
R125	FRE016-104J	RESISTOR	CR 100K 1/16W J 1005	
R126	FRE016-104J	RESISTOR	CR 100K 1/16W J 1005	
R127	FRE017-822F	RESISTOR	CR 8.2K 1/16W F 1608	
R128	FRE017-682F	RESISTOR	CR 6.8K 1/16W F 1608	
R129	FRE017-472F	RESISTOR	CR 4.7K 1/16W F 1608	
R130	FRE017-222F	RESISTOR	CR 2.2K 1/16W F 1608	
R131	FRE017-183F	RESISTOR	CR 18K 1/16W F 1608	
R137	FRE016-470J	RESISTOR	CR 47 1/16W J 1005	
R139	FRE016-120J	RESISTOR	CR 12 1/16W J 1005	
R141	FRE016-120J	RESISTOR	CR 12 1/16W J 1005	

MAIN

Ref.No.	Part No.	Description	Price
R143	FRE017-302F	RESISTOR CR 3K 1/16W F1608	
R144	FRE017-363F	RESISTOR CR 36K 1/16W F1608	
R145	FRE016-104J	RESISTOR CR 100K 1/16W J 1005	
R146	FRE016-473J	RESISTOR CR 47K 1/16W J 1005	
R147	FRE016-473J	RESISTOR CR 47K 1/16W J 1005	
R148	FRE016-473J	RESISTOR CR 47K 1/16W J 1005	
R149	FRE017-223F	RESISTOR CR 22K 1/16W F 1608	
R150	FRE017-273F	RESISTOR CR 27K 1/16W F 1608	
R151	FRE016-682J	RESISTOR CR 6.8K 1/16W J 1005	
R152	FRE016-101J	RESISTOR CR 100 1/16W J 1005	
R153	FRY0011-100	RESISTOR CR 1.0 0.125W F2012	
R154	FRE016-222J	RESISTOR CR 2.2K 1/16W J 1005	
R155	FRE016-000J	RESISTOR CR 0 1/16W J 1005	
R158	FRE016-000J	RESISTOR CR 0 1/16W J 1005	
R159	FRE016-220J	RESISTOR CR 22 1/16W J 1005	
R160	FRE016-000J	RESISTOR CR 0 1/16W J 1005	
R161	FRE016-102J	RESISTOR CR 1K 1/16W J 1005	
R162	FRE017-152J	RESISTOR CR 1.5K 1/16W J 1608	
R163	FRE016-103J	RESISTOR CR 10K 1/16W J 1005	
R164	FRE016-000J	RESISTOR CR 0 1/16W J 1005	
R165	FRE016-000J	RESISTOR CR 0 1/16W J 1005	
R166	FRE018-000J	RESISTOR CR 0 1/10W J 2012	
R203	FRE016-561J	RESISTOR CR 560 1/16W J 1005	
R204	FRE016-561J	RESISTOR CR 560 1/16W J 1005	
R205	FRE016-102J	RESISTOR CR 1K 1/16W J 1005	
R206	FRE016-102J	RESISTOR CR 1K 1/16W J 1005	
R207	FRE016-182J	RESISTOR CR 1.8K 1/16W J 1005	
R208	FRE016-182J	RESISTOR CR 1.8K 1/16W J 1005	
R209	FRE016-182J	RESISTOR CR 1.8K 1/16W J 1005	
R210	FRE016-563J	RESISTOR CR 56K 1/16W J 1005	
R211	FRE016-273J	RESISTOR CR 27K 1/16W J 1005	
R212	FRE016-103J	RESISTOR CR 10K 1/16W J 1005	
R215	FRE012-473D	RESISTOR CR 47K 1/16W D 1608	
R216	FRE012-333D	RESISTOR CR 33K 1/16W D 1608	
R217	FRE016-272J	RESISTOR CR 2.7K 1/16W J 1005	
R218	FRE012-473D	RESISTOR CR 47K 1/16W D 1608	
R219	FRE012-333D	RESISTOR CR 33K 1/16W D 1608	
R220	FRE016-272J	RESISTOR CR 2.7K 1/16W J 1005	
R221	FRE016-333J	RESISTOR CR 33K 1/16W J 1005	
R222	FRE016-333J	RESISTOR CR 33K 1/16W J 1005	
R223	FRE016-333J	RESISTOR CR 33K 1/16W J 1005	
R224	FRE016-333J	RESISTOR CR 33K 1/16W J 1005	
R225	FRE016-222J	RESISTOR CR 2.2K 1/16W J 1005	
R226	FRE016-391J	RESISTOR CR 390 1/16W J 1005	
R301	FRE016-152J	RESISTOR CR 1.5K 1/16W J 1005	
R303	FRE016-270J	RESISTOR CR 27 1/16W J 1005	
R304	FRE016-270J	RESISTOR CR 27 1/16W J 1005	
R308	FRE016-222J	RESISTOR CR 2.2K 1/16W J 1005	
R309	FRE017-106J	RESISTOR CR 10M 1/16W J 1608	
R310	FRE016-104J	RESISTOR CR 100K 1/16W J 1005	

Ref.No.	Part No.	Description	Price
R311	FRE017-683F	RESISTOR CR 68K 1/16W F 1608	
R312	FRE017-104F	RESISTOR CR 100K 1/16W F 1608	
R313	FRE016-103J	RESISTOR CR 10K 1/16W J 1005	
R314	FRE016-223J	RESISTOR CR 22K 1/16W J 1005	
R315	FRE016-473J	RESISTOR CR 47K 1/16W J 1005	
R316	FRE016-222J	RESISTOR CR 2.2K 1/16W J 1005	
R320	FRE016-222J	RESISTOR CR 2.2K 1/16W J 1005	
R322	FRE016-474J	RESISTOR CR 470K 1/16W J 1005	
R323	FQY00043-05	RESISTOR V.D.RESISTOR	
R324	FRE016-000J	RESISTOR CR 0 1/16W J 1005	
R331	FRE016-100J	RESISTOR CR 10 1/16W J 1005	
R332	FRE016-100J	RESISTOR CR 10 1/16W J 1005	
R333	FRE016-100J	RESISTOR CR 10 1/16W J 1005	
R334	FRE016-152J	RESISTOR CR 1.5K 1/16W J 1005	
R335	FRE016-152J	RESISTOR CR 1.5K 1/16W J 1005	
R336	FRE016-152J	RESISTOR CR 1.5K 1/16W J 1005	
R337	FRE016-152J	RESISTOR CR 1.5K 1/16W J 1005	
R338	FRE016-331J	RESISTOR CR 330 1/16W J 1005	
R339	FRE016-472J	RESISTOR CR 4.7K 1/16W J 1005	
R340	FRE016-331J	RESISTOR CR 330 1/16W J 1005	
R341	FRE016-472J	RESISTOR CR 4.7K 1/16W J 1005	
R342	FRE016-331J	RESISTOR CR 330 1/16W J 1005	
R343	FRE016-331J	RESISTOR CR 330 1/16W J 1005	
R349	FQY00043-05	RESISTOR V.D.RESISTOR	
R352	FRE016-000J	RESISTOR CR 0 1/16W J 1005	
R353	FRE016-105J	RESISTOR CR 1M 1/16W J 1005	
R354	FRE016-220J	RESISTOR CR 22 1/16W J 1005	
R357	FRE016-105J	RESISTOR CR 1M 1/16W J 1005	
R358	FRE016-105J	RESISTOR CR 1M 1/16W J 1005	
R360	FRE016-104J	RESISTOR CR 100K 1/16W J 1005	
R361	FRE016-104J	RESISTOR CR 100K 1/16W J 1005	
R362	FRE016-104J	RESISTOR CR 100K 1/16W J 1005	
R363	FRE016-472J	RESISTOR CR 4.7K 1/16W J 1005	
R364	FRE016-104J	RESISTOR CR 100K 1/16W J 1005	
R365	FRE016-104J	RESISTOR CR 100K 1/16W J 1005	
R366	FRE016-474J	RESISTOR CR 470K 1/16W J 1005	
R367	FRE016-474J	RESISTOR CR 470K 1/16W J 1005	
R370	FRE016-104J	RESISTOR CR 100K 1/16W J 1005	
R379	FRE016-105J	RESISTOR CR 1M 1/16W J 1005	
R380	FRE016-474J	RESISTOR CR 470K 1/16W J 1005	
R381	FRE016-474J	RESISTOR CR 470K 1/16W J 1005	
R382	FRE016-474J	RESISTOR CR 470K 1/16W J 1005	
R384	FRE016-000J	RESISTOR CR 0 1/16W J 1005	
R385	FQY00043-05	RESISTOR V.D.RESISTOR	
R386	FQY00043-05	RESISTOR V.D.RESISTOR	
R387	FRE016-103J	RESISTOR CR 10K 1/16W J 1005	
R388	FRE016-222J	RESISTOR CR 2.2K 1/16W J 1005	
R389	FRE016-104J	RESISTOR CR 100K 1/16W J 1005	
R390	FRE016-000J	RESISTOR CR 0 1/16W J 1005	
R392	FRE016-152J	RESISTOR CR 1.5K 1/16W J 1005	

MAIN

Ref.No.	Part No.	Description		Price
R401	FRE016-104J	RESISTOR	CR 100K 1/16W J 1005	
R404	FRE016-104J	RESISTOR	CR 100K 1/16W J 1005	
R406	FRE016-222J	RESISTOR	CR 2.2K 1/16W J 1005	
R407	FRE016-104J	RESISTOR	CR 100K 1/16W J 1005	
R409	FRE017-103F	RESISTOR	CR 10K 1/16W F 1608	
R410	FRE017-103F	RESISTOR	CR 10K 1/16W F 1608	
R411	FRE017-103F	RESISTOR	CR 10K 1/16W F 1608	
R412	FRE017-203F	RESISTOR	CR 20K 1/16W F 1608	
R414	FRE016-104J	RESISTOR	CR 100K 1/16W J 1005	
R415	FRE016-474J	RESISTOR	CR 470K 1/16W J 1005	
R417	FRE016-104J	RESISTOR	CR 100K 1/16W J 1005	
R418	FRE016-104J	RESISTOR	CR 100K 1/16W J 1005	
R419	FRE016-104J	RESISTOR	CR 100K 1/16W J 1005	
R422	FRE017-103F	RESISTOR	CR 10K 1/16W F 1608	
R423	FRE017-103F	RESISTOR	CR 10K 1/16W F 1608	
R424	FRE017-303F	RESISTOR	CR 30K 1/16W F 1608	
R427	FRE016-104J	RESISTOR	CR 100K 1/16W J 1005	
R430	FRE016-102J	RESISTOR	CR 1K 1/16W J 1005	
R431	FRE016-474J	RESISTOR	CR 470K 1/16W J 1005	
R432	FRE016-104J	RESISTOR	CR 100K 1/16W J 1005	
R434	FRE016-474J	RESISTOR	CR 470K 1/16W J 1005	
R435	FRE016-104J	RESISTOR	CR 100K 1/16W J 1005	
R436	FRE016-474J	RESISTOR	CR 470K 1/16W J 1005	
R437	FRE016-104J	RESISTOR	CR 100K 1/16W J 1005	
R438	FRE016-474J	RESISTOR	CR 470K 1/16W J 1005	
R439	FRE016-104J	RESISTOR	CR 100K 1/16W J 1005	
R440	FRE016-474J	RESISTOR	CR 470K 1/16W J 1005	
R441	FRE016-474J	RESISTOR	CR 470K 1/16W J 1005	
R442	FRE016-104J	RESISTOR	CR 100K 1/16W J 1005	
R443	FRE016-750J	RESISTOR	CR 75 1/16W J 1005	
R444	FRE016-474J	RESISTOR	CR 470K 1/16W J 1005	
R445	FRE016-474J	RESISTOR	CR 470K 1/16W J 1005	
R446	FRE016-474J	RESISTOR	CR 470K 1/16W J 1005	
R447	FRE016-104J	RESISTOR	CR 100K 1/16W J 1005	
R449	FRE016-474J	RESISTOR	CR 470K 1/16W J 1005	
R450	FRE016-104J	RESISTOR	CR 100K 1/16W J 1005	
R451	FRE016-474J	RESISTOR	CR 470K 1/16W J 1005	
R452	FRE016-474J	RESISTOR	CR 470K 1/16W J 1005	
R453	FRE016-104J	RESISTOR	CR 100K 1/16W J 1005	
R454	FRE016-271J	RESISTOR	CR 270 1/16W J 1005	
R456	FRE016-474J	RESISTOR	CR 470K 1/16W J 1005	
R457	FRE016-103J	RESISTOR	CR 10K 1/16W J 1005	
R458	FRE016-223J	RESISTOR	CR 22K 1/16W J 1005	
R459	FRE016-101J	RESISTOR	CR 100 1/16W J 1005	
R460	FRE016-104J	RESISTOR	CR 100K 1/16W J 1005	
R461	FRE016-104J	RESISTOR	CR 100K 1/16W J 1005	
R463	FRE016-104J	RESISTOR	CR 100K 1/16W J 1005	
R464	FRE016-680J	RESISTOR	CR 68 1/16W J 1005	
R465	FRE016-100J	RESISTOR	CR 10 1/16W J 1005	
R466	FRE016-104J	RESISTOR	CR 100K 1/16W J 1005	

Ref.No.	Part No.	Description		Price
R467	FRE016-474J	RESISTOR	CR 470K 1/16W J 1005	
R468	FRE016-104J	RESISTOR	CR 100K 1/16W J 1005	
R470	FRE016-474J	RESISTOR	CR 470K 1/16W J 1005	
R478	FRE016-000J	RESISTOR	CR 0 1/16W J 1005	
R479	FRE016-561J	RESISTOR	CR 560 1/16W J 1005	
R482	FRE016-101J	RESISTOR	CR 100 1/16W J 1005	
R484	FRE016-104J	RESISTOR	CR 100K 1/16W J 1005	
R485	FRE016-104J	RESISTOR	CR 100K 1/16W J 1005	
R486	FRE016-473J	RESISTOR	CR 47K 1/16W J 1005	
R488	FRE016-223J	RESISTOR	CR 22K 1/16W J 1005	
R489	FRE016-000J	RESISTOR	CR 0 1/16W J 1005	
R490	FRE016-103J	RESISTOR	CR 10K 1/16W J 1005	
R491	FRE016-105J	RESISTOR	CR 1M 1/16W J 1005	
R492	FRE017-163F	RESISTOR	CR 16K 1/16W F 1608	
R493	FRE017-123F	RESISTOR	CR 12K 1/16W F 1608	
R494	FRE016-474J	RESISTOR	CR 470K 1/16W J 1005	
R495	FRE016-474J	RESISTOR	CR 470K 1/16W J 1005	
R496	FRE016-474J	RESISTOR	CR 470K 1/16W J 1005	
R497	FRE016-474J	RESISTOR	CR 470K 1/16W J 1005	
R801	FRE016-474J	RESISTOR	CR 470K 1/16W J 1005	
R802	FRE016-474J	RESISTOR	CR 470K 1/16W J 1005	
R803	FRE016-474J	RESISTOR	CR 470K 1/16W J 1005	
R805	FRE016-474J	RESISTOR	CR 470K 1/16W J 1005	
R815	FRE016-474J	RESISTOR	CR 470K 1/16W J 1005	
R816	FRE016-474J	RESISTOR	CR 470K 1/16W J 1005	
R817	FRE016-474J	RESISTOR	CR 470K 1/16W J 1005	
R818	FRE017-680J	RESISTOR	CR 68 1/16W J 1608	
R819	FRE017-680J	RESISTOR	CR 68 1/16W J 1608	
R820	FRE017-680J	RESISTOR	CR 68 1/16W J 1608	
R821	FRE017-000J	RESISTOR	CR 0 1/16W J 1608	
R822	FRE016-103J	RESISTOR	CR 10K 1/16W J 1005	
R824	FRE016-102J	RESISTOR	CR 1K 1/16W J 1005	
R825	FRE016-101J	RESISTOR	CR 100 1/16W J 1005	
R827	FRE016-682J	RESISTOR	CR 6.8K 1/16W J 1005	
R828	FRE016-101J	RESISTOR	CR 100 1/16W J 1005	
R829	FRE017-511F	RESISTOR	CR 510 1/16W F 1608	
R830	FRE016-000J	RESISTOR	CR 0 1/16W J 1005	
R836	FRE016-000J	RESISTOR	CR 0 1/16W J 1005	
R837	FRE017-000J	RESISTOR	CR 0 1/16W J 1608	
R841	FRE016-474J	RESISTOR	CR 470K 1/16W J 1005	
R842	FRE016-000J	RESISTOR	CR 0 1/16W J 1005	
R843	FRE016-000J	RESISTOR	CR 0 1/16W J 1005	
R844	FRE016-000J	RESISTOR	CR 0 1/16W J 1005	
R845	FRE016-474J	RESISTOR	CR 470K 1/16W J 1005	
R847	FRE016-474J	RESISTOR	CR 470K 1/16W J 1005	
----- X'TAL -----				
X302	FZ02995-100	X'TAL	FC:32.768KHZ STD	
X304	FZ03804-100	X'TAL	FC:24.375MHZ STD	

4. INDEX



FUJI PHOTO FILM CO., LTD.

26-30, Nishiazabu 2-chome, Minato-ku, Tokyo 106-8620, Japan.