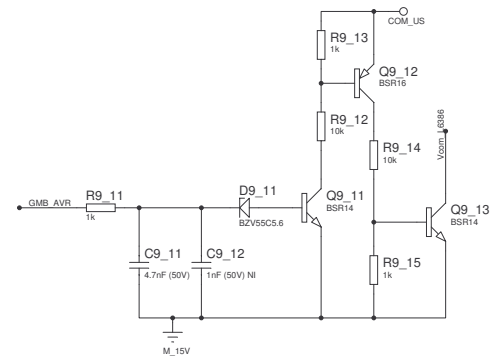
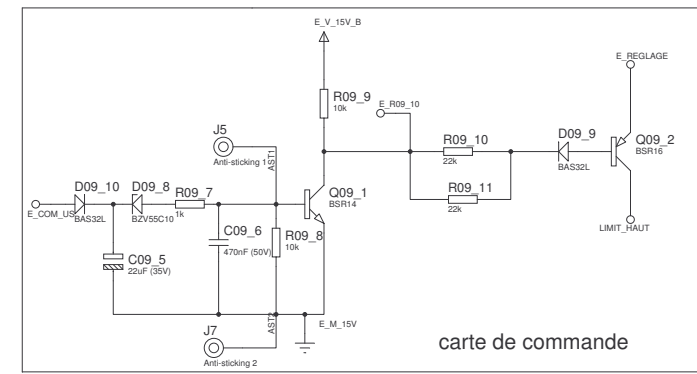
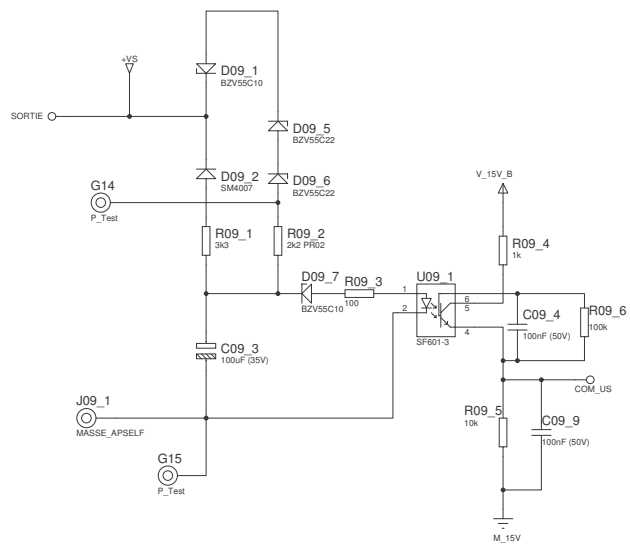


TYPE PRODUIT	GYSMI 190			REFERENCE	9XXXXXXX	
DESSINE PAR	FABRICE WASCHEUL			APPROUVE	DATE	
PROPRIETAIRE	GYSCONSTRUCTIONS ELECTRIQUES ET ELECTRONIQUES			INDUSTRIALISATION	REVISION	FEUILLE No
				IND2	0	2/5



TYPE PRODUIT	GYSMI 190		REFERENCE	9XXXXXXX
DESSINE PAR	FABRICE WASCHEUL		APPROUVE	DATE 02/11/04
PROPRIETAIRE	GYS CONSTRUCTIONS ELECTRIQUES ET ELECTRONIQUES		INDUSTRIALISATION	REVISION
			IND2	0
			FEUILLE No	3/5

BILL OF MATERIALS (Default)

Design: O:\mma\GYSMI 190\En cours de developpement\00_IND2\PCB (fichiers PROTEL uniquement)\PCB GYSMI190_Ind2.DSN
Doc. no.: <NONE>
Revision: <NONE>
Author: <NONE>
Created: 08-Oct-96
Modified: 03/01/05

Partslist generated OK.

QTY	PART-REFS	VALUE	REFGYS	TYCOMP	PACKAGE
-----	-----------	-------	--------	--------	---------

Modules

5	M01,M03,M10,M11,M18	P_TEST	NULL	PTEST	
8	M02,M04,M05,M06,M07,M08,M09,M12	P_Test	NULL	PTEST	

Resistors

3	R00_1,R00_2,R00_3	330k	64024	1206_L	
3	R00_4,R00_5,R08_2	6k82	64043	1206_L	
17	R00_6,R00_18,R00_19,R00_20,R06_12,R10_01,R10_02,R10_03,R10_04,R10_05,R10_06,R10_07,R10_08,R10_14,R10_15,R10_16,R10_17	150k	64020	1206_L	
32	R00_7,R00_8,R00_9,R00_10,R00_11,R00_12,R00_22,R00_23,R2,R03_3,R03_6,R03_7,R03_95,R3,R06_11,R06_24,R6_02,R6_32,R6_33,R08_3,R08_4,R08_5,R08_6,R08_7,R08_16,R09_5,R09_8,R09_9,R9_12,R9_14,R11_01,R11_02	10k	64048	0805_L	
6	R00_14,R00_15,R06_4,R06_23,R10_11,R10_12	47k	64033	1206_L	
13	R00_21,R06_5,R06_6,R06_21,R06_22,R06_96,R6_24,R6_26,R08_8,R08_9,R10_21,R10_22,R11_03	4k75	64013	1206_L	
3	R00_24,R6_01,R09_6	100k	64040	1206_L	
1	R1	4.7 (7W)	63146	68R5W	
2	R03_1,R03_91	680	64003	1206_L	
3	R03_2,R03_92,R6_03	2k21	64010	1206_L	
9	R03_4,R06_7,R06_8,R07_4,R08_1,R08_17,R09_1,R10_09,R10_10	3k3	64021	1206_L	
2	R03_5,R04_6	1k82	64009	1206_L	
1	R03_8	XXX NI	XXXXX	1206_L	
8	R03_9,R03_93,R06_9,R09_4,R09_7,R9_11,R9_13,R9_15	1k	64004	1206_L	
1	R03_94	680 NI	64003 NI	1206_L	
6	R05_1,R07_1,R07_2,R07_3,R10_13,R10_19	10	64012	1206_L	
4	R05_3,R05_4,R05_8,R05_9	150k NI	64020 NI	1206_L	
7	R05_5,R05_6,R6_11,R6_12,R6_15,R07_6,R09_3	100	64015	1206_L	
1	R05_7	68k	64053	1206_L	
1	R06_1	1k3	64032	1206_L	
1	R06_3	15k	64037	1206_L	
1	R6	0	64109	1206_L	
7	R6_21,R6_22,R6_23,R6_25,R6_31,R09_10,R09_11	22k	64005	1206_L	
1	R07_5	47	64018	1206_L	
1	R07_7	221	64035	1206_L	
1	R07_8	470	64108	1206_L	
1	R09_2	2k2 PR02	63112	CAF15	

Capacitors

1	C00_1	1uF (X2 400V)	63462	C_X_1U	
3	C00_2,C00_3,C00_11	4n7 Y	63461	Y47_75	
4	C00_4,C00_5,C00_7,C00_71	470uF (400V)	63447	CAP_470U_400V	
12	C00_6,C00_10,C03_89,C04_7,C05_4,C05_5,C05_6,C06_05,C6_21,C08_1,C08_7,C09_6	470nF (50V)	64028		
2	C00_8,C04_4	1uF (16V)	64029	1206_L	
7	C00_9,C04_52,C05_2,C08_2,C09_4,C09_9,C10_03	100nF (50V)	64006	1206_L	
2	C03_1,C04_6	47nF (50V)	64044	1206_L	
2	C04_3,C9_11	4.7nF (50V)	64047	1206_L	
5	C04_8,C08_4,C09_3,C10_05,C10_08	100uF (35V)	64051	ELECT-6.3	
7	C04_51,C06_1,C06_22,C6_03,C6_15,C09_5,C10_04	22uF (35V)	64050	ELECT-6.3	
12	C05_1,C06_9,C06_12,C06_21,C06_23,C6_01,C6_04,C07_1,C07_2,C07_3,C07_8,C07_9	10nF (50V)	64007	1206_L	
1	C6_02	220pF	64045	1206_L	
1	C07_4	1nF (50V)	64008	1206_L	
1	C9_12	1nF (50V) NI	64008NI	1206_L	
1	C10_01	3n3 (500V)	64112	1206_L	
1	C10_02	220uF (35V)	63463	ELEC-RAD20	
2	C10_06,C10_07	22uF (250V)	63389	ELEC-RAD20	

Integrated Circuits

1	U00_1	TL431AI	64063	SOP8.225	
1	U04_1	UC3845D	64057	SOP14.225	
1	U05_1	IC386	64079	SOP14.225	
1	U06_1	NE555D	63513	SOP8.225	
1	U08_1	LM324D	64054	SOP14.225	
1	U09_1	SF601-3	63455	DIL6_8	
1	U10_01	VIPER22DIP	63501	DIL08	

Transistors

19	Q00_1,Q00_2,Q00_3,Q03_1,Q03_91,Q06_1,Q06_21,Q06_02,Q6_21,Q6_31,Q6_32,Q08_1,Q08_2,Q09_1,Q9_11,Q9_13,Q10_01,Q11_01,Q11_02	BSR14	64002	SOT23_L	
4	Q06_2,Q06_96,Q09_2,Q9_12	BSR16	64001	SOT23_L	
1	Q6_01	PZT2222A	64106	SOT223_T	

Diodes

14	D00_1,D00_3,D00_4,D2,D06_1,D06_11,D06_12,D6_21,D6_31,D6_32,D6_33,D09_9,D09_10,D10_05	BAS32L	64014	SOD80_L	
1	D1	BZV55C18	64022	SOD80_L	
2	D05_2,D05_5	BAT42W	64026	SOD80_L	
3	D05_3,D05_4,D10_04	BZV55C16	64023	SOD80_L	
3	D09_1,D09_7,D09_8	BZV55C10	64027	SOD80_L	
2	D09_2,D10_07	SM4007	64030	MELF_L	
3	D09_5,D09_6,D10_03	BZV55C22	64031	SOD80_L	
1	D9_11	BZV55C5.6	64036	SOD80_L	
1	D10_01	BYG20J	64260	DO214	
4	D10_06,D10_10,D10_11,D10_13	BYG22D	64257	DO214	

Miscellaneous

2	+HT_E_M/A,+HT_S_M/A	VEROPIN		PIN	
4	AC1,AC2,FE,TERRE_2	Faston	75028	FASTON635	
1	CIRCUIT NU	GYSMI190	64187	NULL	
1	CN1	CN_FAN	64256	CN_FAN	
2	CN101,CN102	CONN_10	53103	MOLEX_CONN10	
2	FACE_AV2,FAVE_AV1	Borne a vis	63149	BORNE_H	
8	G01,G02,G03,G04,G05,G12,G13,G16	P_TEST	NULL	PTEST	
6	G06,G09,G10,G11,G14,G15	P_Test	NULL	PTEST	
1	J1	+24V_FAN	NULL	PTEST	
1	J2	MASSE_FAN	NULL	PTEST	
2	J3,J4	Borne a vis pou63149		BORNE_H	
1	J5	Anti-sticking 1NULL		PTEST	
1	J7	Anti-sticking 2NULL		PTEST	
1	J09_1	MASSE_APSELF		PIN	
1	L00_1	IND 1mH 30A	63676	IND_MC_30A	
1	L01_1	LED Verte	63327	LED1	
1	L08_1	LED Orange	63328	LED1	
1	PE1	Faston 6.35	75028	FASTON635	
1	PONT50A		52215	PONT50A	
1	RADIATEUR		64209	NULL	
3	RL00_1,RL00_2,RL00_3	RELAIS 24V 16A	52601	RELAIS110	
1	RONDELLE	M3	41230	NULL	
1	RV03_2	1k	63086	PRE-HMIN	
1	RV03_3	10k	63094	PIHER 10K	
1	SELF2	TR_E55	63677	CARCASSE55	
1	SMI1	SMI_IND1		SMI_IND1_PRE2	
1	SW6_01	E101MD1V3BE	64249	7103MD9ABE	
1	THF10_01	THF_AUX1	64132	ET29	
1	TI1		63638	TI_5HP	
1	TR1		64142	E65_CHINE1	
1	VAR00_1	SK14K420	63446	S14K420	
6	VIS1,VIS2,VIS3,VIS4,VIS5,VIS7	M5 TORX	41231	NULL	
1	VIS6	M3x15 BTR	41039	NULL	

TYPE PRODUIT		GYSMI 190		REFERENCE	9XXXXXXXX			
DESSINE PAR		FABRICE WASCHEUL		APPROUVE		DATE	01/11/04	
PROPRIETAIRE		GYS CONSTRUCTIONS ELECTRIQUES ET ELECTRONIQUES						
		INDUSTRIALISATION		REVISION		FEUILLE No		
		IND2		0		1/5		

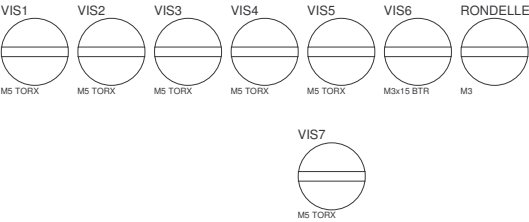
CIRCUIT NU

Circuit nu

GYSMI190

RADIATEUR

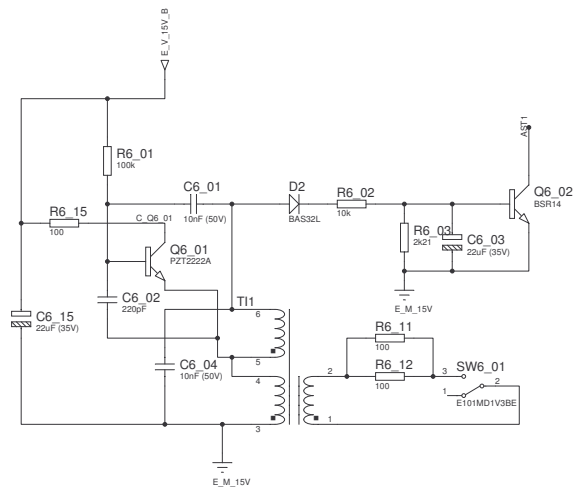
Circuit nu



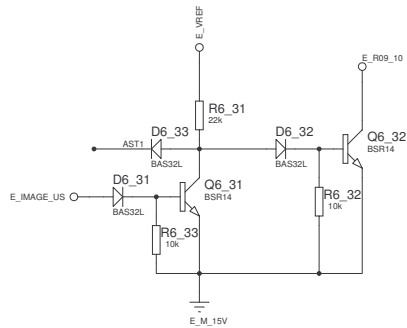
VIS7

M5 TORX

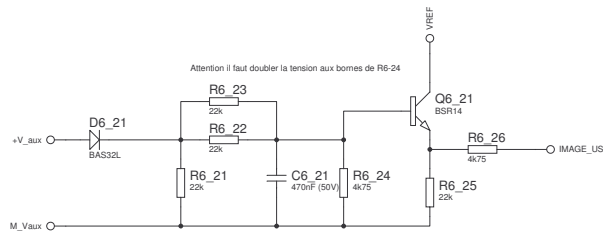
TYPE PRODUIT		GYSMI 190		REFERENCE	9XXXXXXX
DESSINE PAR		FABRICE WASCHEUL		APPROUVE	DATE 02/11/04
PROPRIETAIRE		GYS CONSTRUCTIONS ELECTRIQUES ET ELECTRONIQUES			
		INDUSTRIALISATION	REVISION	FEUILLE No	
		IND2	0	4/5	



Oscillateur de clapp



Circuit d'Arc force (Augmentation de I lorsque US < 5V)



TYPE PRODUIT	GYSMI 190		REFERENCE	A définir	
DESSINE PAR	F.WASCHEUL		APPROUVE	DATE 02/11/04	
PROPRIETAIRE	GYS CONSTRUCTIONS ELECTRIQUES ET ELECTRONIQUES		INDUSTRIALISATION	REVISION	FEUILLE No
	IND2		0		5/5