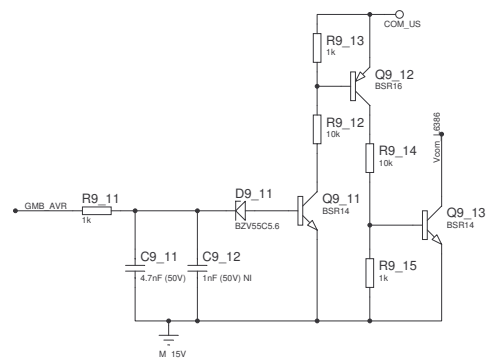
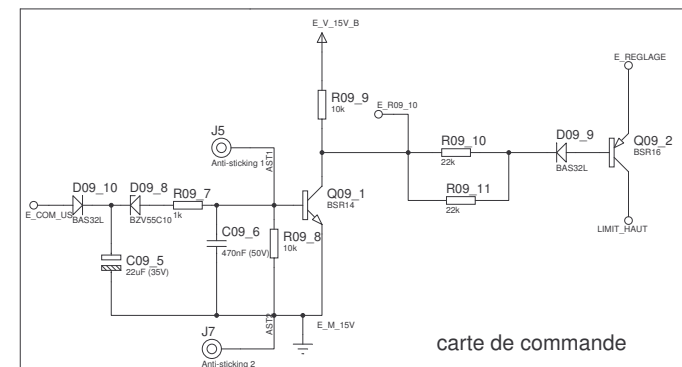
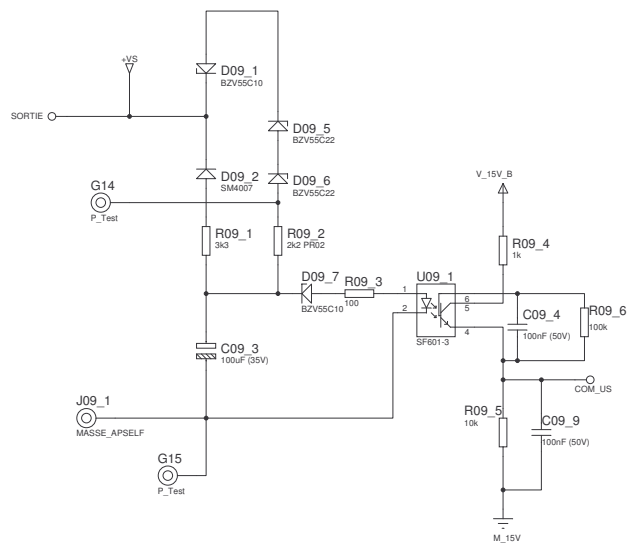


TYPE PRODUIT		GYSMI 190		REFERENCE		97017	
DESSINE PAR		FABRICE WASCHEUL		APPROUVE		DATE	
						30/11/2006	
PROPRIETAIRE							
GYS CONSTRUCTIONS ELECTRIQUES ET ELECTRONIQUES		INDUSTRIALISATION		REVISION		FEUILLE No	
		IND3-3		0		2/5	



TYPE PRODUIT	GYSMI 190		REFERENCE	9701703
DESSINE PAR	FABRICE WASCHEUL		APPROUVE	DATE 30/11/06
PROPRIETAIRE	GYS CONSTRUCTIONS ELECTRIQUES ET ELECTRONIQUES		INDUSTRIALISATION	REVISION
			IND3-3	0
			FEUILLE No	3/5

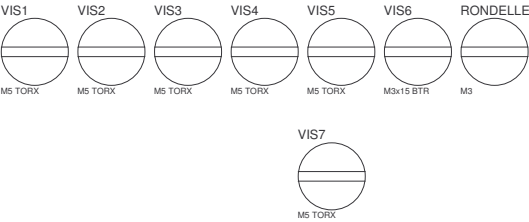
CIRCUIT NU

Circuit nu

GYSMI190

RADIATEUR

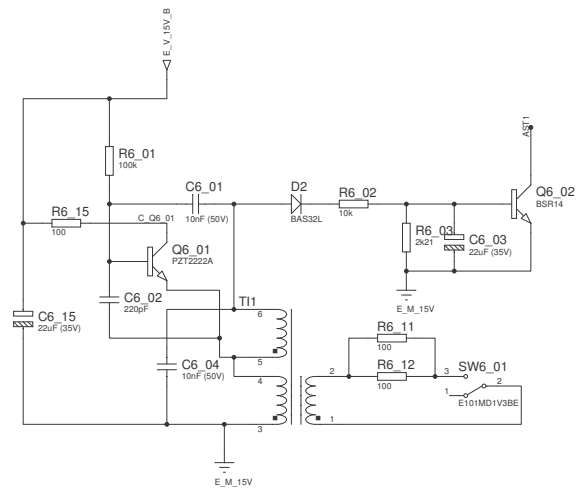
Circuit nu



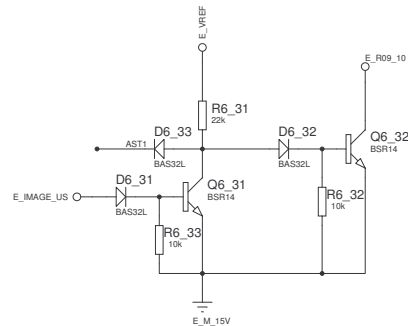
VIS7

M5 TORX

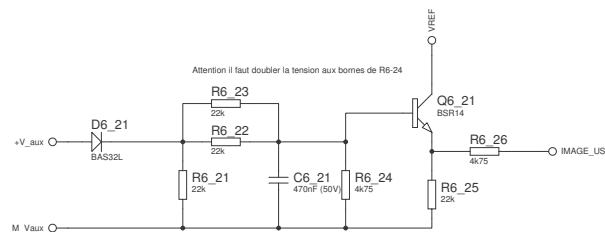
TYPE PRODUIT	GYSMI 190		REFERENCE	97017	
DESSINE PAR	FABRICE WASCHEUL		APPROUVE	DATE	
PROPRIETAIRE				30/11/06	
GYS CONSTRUCTIONS ELECTRIQUES ET ELECTRONIQUES		INDUSTRIALISATION		FEUILLE No	
		IND3-3		REVISION	
				0	
				4/5	



Oscillateur de clapp



Circuit d'Arc force (Augmentation de I lorsque US < 5V)



TYPE PRODUIT	GYSMI 190		REFERENCE	97017
DESSINE PAR	F.WASCHEUL		APPROUVE	DATE 30/11/06
PROPRIETAIRE	GYS CONSTRUCTIONS ELECTRIQUES ET ELECTRONIQUES		INDUSTRIALISATION	FEUILLE No
	IND3-3		REVISION 0	5/5

# **GYSMI 190 - Electronics BOM - PCB Index 3.3**

Created: 08-Oct-96

Modified: 30/11/06

Partslist generated OK.

QTY	PART-REFS	VALUE	REFGYS	PACKAGE
-----	-----	-----	-----	-----
Resistors				
-----				
3	R00_1,R00_2,R00_3	330k	64024	1206_L
3	R00_4,R00_5,R08_2	6k82	64043	1206_L
17	R00_6,R00_18,R00_19,R00_20, R06_12,R10_01,R10_02,R10_03, R10_04,R10_05,R10_06,R10_07, R10_08,R10_14,R10_15,R10_16, R10_17	150k	64020	1206_L
31	R00_7,R00_8,R00_9,R00_10, R00_11,R00_12,R00_22,R00_23, R2,R03_3,R03_6,R03_7,R03_95, R3,R06_11,R06_24,R6_02,R6_32, R6_33,R08_3,R08_4,R08_5, R08_6,R08_7,R08_16,R09_5, R09_8,R09_9,R9_12,R9_14, R11_01	10k	64048	0805_L
6	R00_14,R00_15,R06_4,R06_23, R10_11,R10_12	47k	64033	1206_L
14	R00_21,R06_5,R06_6,R06_21, R06_22,R06_96,R6_24,R6_26, R08_8,R08_9,R08_10,R10_21, R10_22,R11_03	4k75	64013	1206_L
3	R00_24,R6_01,R09_6	100k	64040	1206_L
1	R1	4.7 (7W)	63146	68R5W
2	R03_1,R03_91	680	64003	1206_L
3	R03_2,R03_92,R6_03	2k21	64010	1206_L
7	R03_4,R07_4,R08_1,R08_17, R09_1,R10_09,R10_10	3k3	64021	1206_L
2	R03_5,R04_6	1k82	64009	1206_L
1	R03_8	XXX NI	XXXXXX	1206_L
10	R03_9,R03_93,R06_7,R06_8, R06_9,R09_4,R09_7,R9_11, R9_13,R9_15	1k	64004	1206_L
1	R03_94	680 NI	64003 NI	1206_L
5	R05_1,R07_1,R07_2,R07_3, R10_13	10	64012	1206_L
4	R05_3,R05_4,R05_8,R05_9	150k NI	64020 NI	1206_L
8	R05_5,R05_6,R6_11,R6_12, R6_15,R07_6,R09_3,R10_19	100	64015	1206_L
1	R05_7	68k	64053	1206_L
1	R06_1	1k3	64032	1206_L
1	R06_3	15k	64037	1206_L
1	R6	0	64109	1206_L
7	R6_21,R6_22,R6_23,R6_25, R6_31,R09_10,R09_11	22k	64005	1206_L
1	R07_5	47	64018	1206_L
1	R07_7	NI	NI	1206_L
1	R07_8	NI	64108 NI	1206_L
1	R09_2	2k2 PR02	63112	CAP15
1	R11_02	2k2	64010	1206_L

Capacitors

-----

1	C00_1	1uF(X2 400V)	63462	C_X_1U
3	C00_2,C00_3,C00_11	4n7 Y	63461	Y47_75
4	C00_4,C00_5,C00_7,C00_71	470uF (400V)	63447	CAP_470U
12	C00_6,C00_10,C03_89,C04_7, C05_4,C05_5,C05_6,C06_05, C6_21,C08_1,C08_7,C09_6	470nF (50V)	64028	1206_L
2	C00_8,C04_4	1uF (16V)	64029	1206_L
7	C00_9,C04_52,C05_2,C08_2, C09_4,C09_9,C10_03	100nF (50V)	64006	1206_L
2	C03_1,C04_6	47nF (50V)	64044	1206_L
3	C04_3,C06_81,C9_11	4.7nF (50V)	64047	1206_L
5	C04_8,C08_4,C09_3,C10_05, C10_08	100uF (35V)	64051	ELECT-6.
7	C04_51,C06_1,C06_22,C6_03, C6_15,C09_5,C10_04	22uF (35V)	64050	ELECT-6.
12	C05_1,C06_9,C06_12,C06_21, C06_23,C6_01,C6_04,C07_1, C07_2,C07_3,C07_8,C07_9	10nF (50V)	64007	1206_L
1	C6_02	220pF	64045	1206_L
1	C07_4	1nF (50V)	64008	1206_L
1	C9_12	1nF (50V) NI	64008NI	1206_L
1	C10_01	3n3 (500V)	64112	1206_L
1	C10_02	220uF (35V)	63463	ELEC-RAD
2	C10_06,C10_07	22uF (250V)	63389	ELEC-RAD

#### Integrated Circuits

1	U00_1	TL431AI	64063	SOP8.225
1	U04_1	UC3845D	64057	SOP14.22
1	U05_1	L6386	64079	SOP14.22
1	U06_1	NE555D	63513	SOP8.225
1	U08_1	LM324D	64054	SOP14.22
1	U09_1	SF601-3	63455	DIL6_8
1	U10_01	VIPER22DIP	63501	DIL08

#### Transistors

19	Q00_1,Q00_2,Q00_3,Q03_1, Q03_91,Q06_1,Q06_21,Q6_02, Q6_21,Q6_31,Q6_32,Q08_1, Q08_2,Q09_1,Q9_11,Q9_13, Q10_01,Q11_01,Q11_02	BSR14	64002	SOT23_L
4	Q06_2,Q06_96,Q09_2,Q9_12	BSR16	64001	SOT23_L
1	Q6_01	PZT2222A	64106	SOT223_T

#### Diodes

14	D00_1,D00_3,D00_4,D2,D06_1, D06_11,D06_12,D6_21,D6_31, D6_32,D6_33,D09_9,D09_10, D10_05	BAS32L	64014	SOD80_L
1	D1	BZV55C18	64022	SOD80_L
1	D05_1	BZV55C5V6	64036	SOD80_L
2	D05_2,D05_5	BAT42W	64026	SOD80_L
3	D05_3,D05_4,D10_04	BZV55C16	64023	SOD80_L
3	D09_1,D09_7,D09_8	BZV55C10	64027	SOD80_L
2	D09_2,D10_07	SM4007	64030	MELF_L
3	D09_5,D09_6,D10_03	BZV55C22	64031	SOD80_L
1	D9_11	BZV55C5.6	64036	SOD80_L
1	D10_01	BYG20J	64260	DO214
4	D10_06,D10_10,D10_11,D10_13	BYG22D	64257	DO214

#### Miscellaneous



2	+HT_E_M/A,+HT_S_M/A	VEROPIN		PIN
4	AC1,AC2,PE,TERRE_2	Faston	75028	FASTON63
1	CIRCUIT NU	GYSMI190	64187 Ind	3 NULL
1	CN1	CN_FAN	64256	CN_FAN
2	CN101,CN102	CONN_10	53103	MOLEX_CO
1	FAVE_AV1	Borne a vis	63149	BORNE_H
8	G01,G02,G03,G04,G05,G12,G13, G16	P_TEST	NULL	PTEST
6	G06,G09,G10,G11,G14,G15	P_Test	NULL	PTEST
1	J1	+24V_FAN	NULL	PTEST
1	J2	MASSE_FAN	NULL	PTEST
2	J3,J4	Borne a vis	pour pla63149	BORNE_H
1	J5	Anti-stickin	g 1 NULL	PTEST
1	J7	Anti-stickin	g 2 NULL	PTEST
1	J09_1	MASSE_APSELF		PIN
1	L00_1	IND 1mH 30A	63676	IND_MC_3
1	L01_1	LED Verte	63327	LED1
1	L08_1	LED Orange	63328	LED1
1	PE1	Faston 6.35	75028	FASTON63
1	PONT50A		52215	PONT50A
1	RADIATEUR		64209	NULL
3	RL00_1,RL00_2,RL00_3	RELAIS 24V 1	6A 52601	RELAIS11
1	RONDELLE	M3	41230	NULL
1	RV03_2	1k	63086	PRE-HMIN
1	RV03_3	10k	63094	PIHER 10
1	SELF2	TR_E55	63677	CARCASSE
1	SW6_01	E101MD1V3BE	64249	7103MD9A
1	THF10_01	THF_AUX1	64132	ET29
1	TI1		63638	TI_5HF
1	TR1		64142	E65_CHIN
1	VAR00_1	SK14K420	63446	S14K420
6	VIS1,VIS2,VIS3,VIS4,VIS5, VIS7	M5 TORX	41231	NULL
1	VIS6	M3x15 BTR	41039	NULL